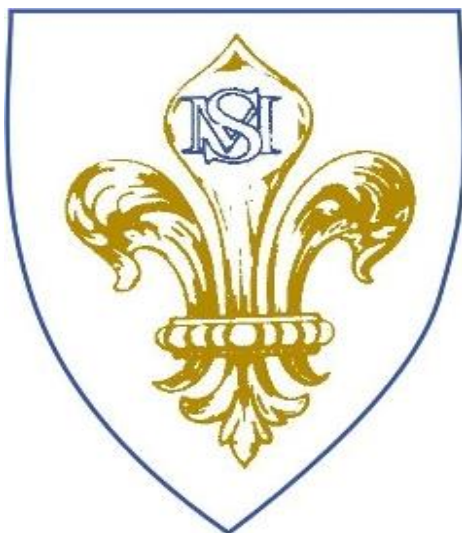


St. Mary's Catholic Primary School and Nursery

Part of The Christus Catholic Trust



Child Protection and Safeguarding Policy

Respect Ourselves, Respect
Others, Respect our World, Love
God

This school is committed to safe guarding and promoting the welfare of children and young people and expects all staff and volunteers to share in this commitment



Policy Name: Child Protection and Safeguarding Policy		
Reviewer: V McBrown	Reviewed Date: 4 th January 2024	Date of next review: September 2024
Approved by Governors:		

Contents

Important contacts	3
1. Aims	3
2. Legislation and statutory guidance	3
3. Definitions	4
4. Equality statement	6
5. Roles and responsibilities	7
6. Confidentiality	11
7. Recognising abuse and taking action	12
8. Online safety and the use of mobile technology	20
9. Notifying parents or carers	21
10. Pupils potentially at greater risk of harm	22
11 Use of school premises for out of school activities	22
12. Complaints and concerns about school safeguarding policies	24
13. Record-keeping	24
14. Training	25
15. Monitoring arrangements	26
16. Links with other policies	26
Appendix 1: types of abuse	28
Appendix 2: safer recruitment and DBS checks – policy and procedures	29
Appendix 3: allegations of abuse made against staff	33
Appendix 4: specific safeguarding issues	40
Appendix 5: Acronyms	43

Important contacts

ROLE/ORGANISATION	NAME	CONTACT DETAILS
Designated safeguarding lead (DSL)	Victoria McBrown	admin@stmarystilbury.co.uk
Deputy DSL	Ellis Beauchamp Melanie Smith	admin@stmarystilbury.co.uk
Local authority designated officer (LADO)	Sharon Owen (Monday, Tuesday, Friday)	07738 821 584 lado@thurrock.gov.uk
	Trevor Willis (Wednesday, Thursday)	07565 620 631 lado@thurrock.gov.uk
	Marie Jerman, LADO admin (Monday to Friday)	07762 406 606
Chair of governors	Serene Yeboah Jackson	serene@stmarystilbury.co.uk
Channel helpline		020 7340 7264

1. Aims of the Policy

The school aims to ensure that:

- › Appropriate action is taken in a timely manner to safeguard and promote children's welfare
- › All staff are aware of their statutory responsibilities with respect to safeguarding
- › Staff are properly trained in recognising and reporting safeguarding issues

2. Legislation and statutory guidance

This policy is based on the Department for Education's statutory guidance [Keeping Children Safe in Education \(2023\)](#) and [Working Together to Safeguard Children \(2023\)](#), and the [Governance Handbook](#). We comply with this guidance and the arrangements agreed and published by our 3 local safeguarding partners.

Legislation

- Children Act 1989
- Sexual Offences Act 2003
- Female Genital Mutilation Act 2003 (as inserted by the Serious Crime Act 2015)
- Children Act 2004
- Safeguarding Vulnerable Groups Act 2006
- Apprenticeships, Children and Learning Act 2009
- Equality Act 2010
- The Education (School Teachers' Appraisal) (England) Regulations 2012 (as amended)
- Anti-social Behaviour, Crime and Policing Act 2014
- Counter-Terrorism and Security Act 2015
- The UK General Data Protection Regulation (UK GDPR)
- Data Protection Act 2018
- Voyeurism (Offences) Act 2019
- Domestic Abuse Act 2021
- Marriage and Civil Partnership (Minimum Age) Act 2022

Statutory guidance

- DfE (2015) 'The Prevent duty'
- DfE (2023) 'Working Together to Safeguard Children'
- DfE (2018) 'Disqualification under the Childcare Act 2006'
- DfE (2023) 'Keeping children safe in education 2023'
- HM Government (2020) 'Multi-agency statutory guidance on female genital mutilation'
- HM Government (2021) 'Channel Duty Guidance: Protecting people vulnerable to being drawn into terrorism'
- Home Office and Foreign, Commonwealth and Development Office (2023) 'Multi-agency statutory guidance for dealing with forced marriage and Multi-agency practice guidelines: Handling cases of forced marriage'

Non-statutory guidance

- DfE (2015) 'What to do if you're worried a child is being abused'
- DfE (2017) 'Child sexual exploitation'
- DfE (2018) 'Information sharing'
- DfE (2020) 'Sharing nudes and semi-nudes: advice for education settings working with children and young people'
- DfE (2021) 'Teachers' Standards'
- DfE (2022) 'Recruit teachers from overseas'
- DfE (2022) 'Working together to improve school attendance'
- DfE (2023) 'Meeting digital and technology standards in schools and colleges'
- Department of Health and Social Care (2022) 'Virginity testing and hymenoplasty: multi-agency guidance'

3. Definitions

The terms “**children**” and “**child**” refer to anyone under the age of 18.

For the purposes of this policy, “**safeguarding and protecting the welfare of children**” is defined as:

- Protecting pupils from maltreatment.
- Preventing the impairment of pupils' mental and physical health or development.
- Ensuring that pupils grow up in circumstances consistent with the provision of safe and effective care.
- Taking action to enable all pupils to have the best outcomes.

For the purposes of this policy, “**consent**” is defined as having the freedom and capacity to choose to engage in sexual activity. Consent may be given to one sort of sexual activity but not another, and can be withdrawn at any time during sexual activity and each time activity occurs. A person only consents to a sexual activity if they agree by choice to that activity, and has the freedom and capacity to make that choice. Children under the age of 13 can never consent to any sexual activity. The age of consent is 16.

For the purposes of this policy, “**sexual violence**” refers to the following offences as defined under the Sexual Offences Act 2003:

- **Rape:** A person (A) commits an offence of rape if they intentionally penetrate the vagina, anus or mouth of another person (B) with their penis, B does not consent to the penetration, and A does not reasonably believe that B consents.
- **Assault by penetration:** A person (A) commits an offence if they intentionally penetrate the vagina or anus of another person (B) with a part of their body or anything else, the penetration is sexual, B does not consent to the penetration, and A does not reasonably believe that B consents.

- **Sexual assault:** A person (A) commits an offence of sexual assault if they intentionally touch another person (B), the touching is sexual, B does not consent to the touching, and A does not reasonably believe that B consents.
- **Causing someone to engage in sexual activity without consent:** A person (A) commits an offence if they intentionally cause another person (B) to engage in an activity, the activity is sexual, B does not consent to engaging in the activity, and A does not reasonably believe that B consents. This could include forcing someone to strip, touch themselves sexually, or to engage in sexual activity with a third party.

For the purposes of this policy, “**sexual harassment**” refers to unwanted conduct of a sexual nature that occurs online or offline, inside or outside of school. Sexual harassment is likely to violate a pupil’s dignity, make them feel intimidated, degraded or humiliated, and create a hostile, offensive, or sexualised environment. If left unchallenged, sexual harassment can create an atmosphere that normalises inappropriate behaviour and may lead to sexual violence. **Sexual harassment can include, but is not limited to:**

- Sexual comments, such as sexual stories, lewd comments, sexual remarks about clothes and appearance, and sexualised name-calling.
- Sexual “jokes” and taunting.
- Physical behaviour, such as deliberately brushing against someone, interfering with someone’s clothes, and displaying images of a sexual nature.
- Online sexual harassment, which may be standalone or part of a wider pattern of sexual harassment and/or sexual violence. This includes:
 - The consensual and non-consensual sharing of nude and semi-nude images and/or videos.
 - Sharing unwanted explicit content.
 - Upskirting.
 - Sexualised online bullying.
 - Unwanted sexual comments and messages, including on social media.
 - Sexual exploitation, coercion, and threats.

For the purposes of this policy, “**upskirting**” refers to the act, as identified the Voyeurism (Offences) Act 2019, of taking a picture or video under another person’s clothing, without their knowledge or consent, with the intention of viewing that person’s genitals or buttocks, with or without clothing, to obtain sexual gratification, or cause the victim humiliation, distress or alarm. Upskirting is a criminal offence. Anyone, including pupils and staff, of any gender can be a victim of upskirting.

For the purposes of this policy, the “**consensual and non-consensual sharing of nude and semi-nude images and/or videos**”, colloquially known as “**sexting**”, is defined as the sharing between pupils of sexually explicit content, including indecent imagery. For the purposes of this policy, “**indecent imagery**” is defined as an image which meets one or more of the following criteria:

- Nude or semi-nude sexual posing
- A child touching themselves in a sexual way
- Any sexual activity involving a child
- Someone hurting a child sexually
- Sexual activity that involves animals

For the purposes of this policy, “**abuse**” is defined as a form of maltreatment of a child which involves inflicting harm or failing to act to prevent harm. Harm can include ill treatment that is not physical as well as the impact of witnessing the ill treatment of others – this can be particularly relevant, for example, in relation to the impact on children of all forms of domestic abuse. Children may be abused in a family, institutional or community setting by those known to them or by others, e.g. via the internet. Abuse can take place wholly online, or technology may be used to facilitate offline abuse. Children may be abused by one or multiple adults or other children.

For the purposes of this policy, “**physical abuse**” is defined as a form of abuse which may involve actions such as hitting, shaking, throwing, poisoning, burning or scalding, drowning, suffocating, or otherwise causing

physical harm to a child. Physical abuse can also be caused when a parent fabricates the symptoms of, or deliberately induces, illness in a child.

For the purposes of this policy, “**emotional abuse**” is defined as the persistent emotional maltreatment of a child such as to cause severe and adverse effects on the child’s emotional development. This may involve conveying to a child that they are worthless, unloved, inadequate, or valued only insofar as they meet the needs of another person. It may include not giving the child the opportunities to express their views, deliberately silencing them, ‘making fun’ of what they say or how they communicate. It may feature age- or developmentally inappropriate expectations being imposed on children, such as interactions that are beyond their developmental capability, overprotection and limitation of exploration and learning, or preventing the child from participating in normal social interaction. It may involve seeing or hearing the ill-treatment of another. It may involve serious bullying, including cyberbullying, causing the child to frequently feel frightened or in danger, or the exploitation or corruption of children. Some level of emotional abuse is involved in all types of maltreatment of a child, but it may also occur alone.

For the purposes of this policy, “**sexual abuse**” is defined as abuse that involves forcing or enticing a child to take part in sexual activities, not necessarily involving violence, and regardless of whether the child is aware of what is happening. This may involve physical contact, including assault by penetration, or non-penetrative acts, such as masturbation, kissing, rubbing, and touching outside of clothing. It may also include non-contact activities, such as involving children in looking at, or in the production of, sexual images, encouraging children to behave in sexually inappropriate ways, or grooming a child in preparation for abuse. Sexual abuse can be perpetrated by people of any gender and age.

For the purposes of this policy, “**neglect**” is defined as the persistent failure to meet a child’s basic physical and/or psychological needs, likely to result in serious impairment of a child’s health or development. This may involve a parent or carer failing to provide a child with adequate food, clothing or shelter (including exclusion from home or abandonment); failing to protect a child from physical or emotional harm or danger; failing to ensure adequate supervision (including through the use of inappropriate caregivers); or failing to ensure access to appropriate medical care or treatment. It may also include neglect of, or unresponsiveness to, a child’s basic emotional needs.

4. Equality statement

Some children have an increased risk of abuse, and additional barriers can exist for some children with respect to recognising or disclosing it. We are committed to anti-discriminatory practice and recognise children’s diverse circumstances. We ensure that all children have the same protection, regardless of any barriers they may face.

We give special consideration to children who:

- › Have special educational needs (SEN) or disabilities or health conditions (see section 10)
- › Are young carers
- › May experience discrimination due to their race, ethnicity, religion, gender identification or sexuality
- › Have English as an additional language
- › Are known to be living in difficult situations – for example, temporary accommodation or where there are issues such as substance abuse or domestic violence
- › Are at risk of FGM, sexual exploitation, forced marriage, or radicalisation
- › Are asylum seekers
- › Are at risk due to either their own or a family member’s mental health needs
- › Are looked after or previously looked after (see section 12)
- › Are missing from education
- › Whose parent/carer has expressed an intention to remove them from school to be home educated

5. Roles and responsibilities

All staff have a responsibility to:

- Consider, at all times, what is in the best interests of the pupil.
- Maintain an attitude of 'it could happen here' where safeguarding is concerned.
- Provide a safe environment in which pupils can learn.
- Be prepared to identify pupils who may benefit from early help.
- Be aware of the school's systems which support safeguarding, including any policies, procedures, information and training provided upon induction.
- Be aware of the role and identity of the DSL and deputy DSLs.
- Undertake safeguarding training, including online safety training (which, amongst other things, includes an understanding of the expectations and responsibilities relating to filtering and monitoring), during their induction – this will be regularly updated.
- Receive and understand child protection and safeguarding (including online safety) updates, e.g. via email, as required, and at least annually.
- Be aware of the local early help process and understand their role in it.
- Be aware of, and understand, the process for making referrals to CSCS, as well as for making statutory assessments under the Children Act 1989 and their role in these assessments.
- Make a referral to CSCS and/or the police immediately, if at any point there is a risk of immediate serious harm to a child.
- Support social workers in making decisions about individual children, in collaboration with the DSL.
- Be aware of and understand the procedure to follow in the event that a child confides they are being abused, exploited or neglected.
- Be aware that a pupil may not feel ready or know how to tell someone that they are being abused, exploited or neglected, and/or may not recognise their experiences as harmful.
- Maintain appropriate levels of confidentiality when dealing with individual cases.
- Reassure victims that they are being taken seriously, that they will be supported, and that they will be kept safe.
- Speak to the DSL if they are unsure about how to handle safeguarding matters.
- Be aware of safeguarding issues that can put pupils at risk of harm.
- Be aware of behaviours that could potentially be a sign that a pupil may be at risk of harm.

Teachers, including the headteacher, have a responsibility to:

- Safeguard pupils' wellbeing and maintain public trust in the teaching profession as part of their professional duties, as outlined in the 'Teachers' Standards'.
- Personally report any cases to the police where it appears that an act of FGM has been carried out, also referred to as 'known' cases, as soon as possible.

The governing board has a duty to:

- Take strategic leadership responsibility for the school's safeguarding arrangements.
- Ensure that the school complies with its duties under the above child protection and safeguarding legislation.
- Guarantee that the policies, procedures and training opportunities in the school are effective and comply with the law at all times.
- Guarantee that the school contributes to multi-agency working in line with the statutory guidance '[Working Together to Safeguard Children](#)'.
- Confirm that the school's safeguarding arrangements take into account the procedures and practices of the LA as part of the inter-agency safeguarding procedures.

- Understand the local criteria for action and the local protocol for assessment, and ensure these are reflected in the school's policies and procedures.
- Comply with its obligations under section 14B of the Children Act 2004 to supply the local safeguarding arrangements with information to fulfil its functions.
- Ensure that staff working directly with children read at least Part one of KCSIE.
- Ensure that staff who do not work directly with children read either Part one or Annex A of KCSIE. **NB:** Individual schools assess which guidance will be most effective for their staff to safeguard and promote the welfare of children.
- Ensure that mechanisms are in place to assist staff to understand and discharge their role and responsibilities in regard to safeguarding children.
- Ensure a senior board level lead takes leadership responsibility for safeguarding arrangements.
- Appoint a member of staff from the SLT to the role of DSL as an explicit part of the role-holder's job description.
- Appoint one or more deputy DSLs to provide support to the DSL, and ensure that they are trained to the same standard as the DSL and that the role is explicit in their job descriptions.
- Facilitate a whole-school approach to safeguarding; this includes ensuring that safeguarding and child protection are at the forefront and underpin all relevant aspects of process and policy development.
- Where there is a safeguarding concern, ensure the child's wishes and feelings are taken into account when determining what action to take and what services to provide.
- Ensure systems are in place, children to confidently report abuse, knowing that their concerns will be treated seriously, and they can safely express their views and give feedback; these systems will be well-promoted, easily understood, and easily accessible.
- Ensure that staff have due regard to relevant data protection principles that allow them to share and withhold personal information.
- Ensure that a member of the governing board is nominated to liaise with the LA and/or partner agencies on issues of child protection and in the event of allegations of abuse made against the headteacher or another governor.
- Guarantee that there are effective and appropriate policies and procedures in place.
- Ensure all relevant persons are aware of the school's local safeguarding arrangements, including the governing board itself, the SLT and DSL.
- Make sure that pupils are taught about safeguarding, including protection against dangers online (including when they are online at home), through teaching and learning opportunities, as part of providing a broad and balanced curriculum.
- Adhere to statutory responsibilities by conducting pre-employment checks on staff who work with children, taking proportionate decisions on whether to ask for any checks beyond what is required.
- Ensure that staff are appropriately trained to support pupils to be themselves at school, e.g. if they are LGBTQ+.
- Ensure the school has clear systems and processes in place for identifying possible mental health problems in pupils, including clear routes to escalate concerns and clear referral and accountability systems.
- Guarantee that volunteers are appropriately supervised.
- Make sure that at least one person on any appointment panel has undertaken safer recruitment training.
- Ensure that all staff receive safeguarding and child protection training updates, e.g. emails, as required, but at least annually.
- Ensure that all governors receive appropriate safeguarding and child protection training upon their induction and that this training is updated regularly.
- Certify that there are procedures in place to handle allegations against staff, supply staff, volunteers and contractors.

- Confirm that there are procedures in place to make a referral to the DBS and the Teaching Regulation Agency (TRA), where appropriate, if a person in regulated activity has been dismissed or removed due to safeguarding concerns or would have been had they not resigned.
- Guarantee that there are procedures in place to handle pupils' allegations against other pupils.
- Ensure that appropriate disciplinary procedures are in place, as well as policies pertaining to the behaviour of pupils and staff.
- Ensure that procedures are in place to eliminate unlawful discrimination, harassment and victimisation, including those in relation to child-on-child abuse.
- Guarantee that there are systems in place for pupils to express their views and give feedback.
- Establish an early help procedure and ensure all staff understand the procedure and their role in it.
- Appoint a designated teacher to promote the educational achievement of LAC and ensure that this person has undergone appropriate training.
- Ensure that the designated teacher works with the VSH to discuss how the pupil premium funding can best be used to support LAC.
- Introduce mechanisms to assist staff in understanding and discharging their roles and responsibilities.
- Make sure that staff members have the skills, knowledge and understanding necessary to keep LAC safe, particularly with regard to the pupil's legal status, contact details and care arrangements.
- Put in place appropriate safeguarding responses for pupils who become absent from education, particularly on repeat occasions and/or for prolonged periods, to help identify any risk of abuse, neglect or exploitation, and prevent the risk of their disappearance in future.
- Ensure that all members of the governing board have been subject to an enhanced DBS check.
- Create a culture where staff are confident to challenge senior leaders over any safeguarding concerns.
- Be aware of their obligations under the Human Rights Act 1998, the Equality Act 2010 (including the Public Sector Equality Duty), the Data Protection Act 2018, the UK GDPR and the local multi-agency safeguarding arrangements.

The headteacher has a duty to:

- Ensure that the policies and procedures adopted by the governing board, particularly concerning referrals of cases of suspected abuse and neglect, are followed by staff.
- Provide staff with the appropriate policies and information upon induction.

The DSL has a duty to:

- Take lead responsibility for safeguarding and child protection, including online safety and understanding the filtering and monitoring systems and processes in place.
- Provide advice and support to other staff on child welfare, safeguarding and child protection matters.
- Take part in strategy discussions and inter-agency meetings, and/or support other staff to do so.
- Contribute to the assessment of children, and/or support other staff to do so.
- During term time, be available during school hours for staff to discuss any safeguarding concerns.
NB: Individual schools, working with the DSL, define what "available" means and whether, in exceptional circumstances, availability via phone, videocall, or other media is an acceptable substitution for in-person availability.
- Arrange, alongside the school, adequate and appropriate cover for any activities outside of school hours or terms.
- Refer cases:
 - To CSCS where abuse and neglect are suspected, and support staff who make referrals to CSCS.
 - To the Channel programme where radicalisation concerns arise, and support staff who make referrals to the Channel programme.

- To the DBS where a person is dismissed or has left due to harm, or risk of harm, to a child.
- To the police where a crime may have been committed, in line with the National Police Chiefs' Council (NPCC) guidance.
- Act as a source of support, advice and expertise for all staff.
- Act as a point of contact with the safeguarding partners.
- Liaise with the headteacher to inform them of issues, especially regarding ongoing enquiries under section 47 of the Children Act 1989 and police investigations.
- Liaise with the deputy DSLs to ensure effective safeguarding outcomes.
- Liaise with the case manager and the LA designated officers (LADOs) for child protection concerns in cases concerning staff.
- Liaise with staff on matters of safety, safeguarding and welfare, including online and digital safety.
- Liaise with staff when deciding whether to make a referral by liaising with relevant agencies so that children's needs are considered holistically.
- Liaise with the senior mental health lead and, where available, the mental health support team, where safeguarding concerns are linked to mental health.
- Promote supportive engagement with parents in safeguarding and promoting the welfare of children, including where families may be facing challenging circumstances.
- Work with the headteacher and relevant strategic leads, taking lead responsibility for promoting educational outcomes by knowing the welfare, safeguarding and child protection issues that children in need are experiencing, or have experienced, and identifying the impact that these issues might be having on their attendance, engagement and achievement at school. This includes:
 - Ensuring that the school knows which pupils have or had a social worker.
 - Understanding the academic progress and attainment of these pupils.
 - Maintaining a culture of high aspirations for these pupils.
 - Supporting teachers to provide additional academic support or reasonable adjustments to help these pupils reach their potential.
 - Helping to promote educational outcomes by sharing the information about the welfare, safeguarding and child protection issues these pupils are experiencing with teachers and the SLT.
- Ensure that child protection files are kept up-to-date and only accessed by those who need to do so.
- Ensure that a pupil's child protection file is transferred as soon as possible, and within five days, when transferring to a new school, and consider any additional information that should be shared.
- Ensure each member of staff has access to and understands the school's Child Protection and Safeguarding Policy and procedures – this will be discussed during the staff induction process.
- Work with the governing board to ensure the school's Child Protection and Safeguarding Policy is reviewed annually, and the procedures are updated and reviewed regularly.
- Ensure the school's Child Protection and Safeguarding Policy is available publicly, and parents are aware that the school may make referrals for suspected cases of abuse or neglect, as well as the role the school plays in these referrals.
- Link with safeguarding partner arrangements to make sure that staff are aware of the training opportunities available and the latest local policies on safeguarding.
- Undergo training, and update this training at least every two years.
- Obtain access to resources and attend any relevant or refresher training courses.
- Encourage a culture of listening to children and taking account of their wishes and feelings; this includes understanding the difficulties pupils may have in approaching staff about their circumstances and considering how to build trusted relationships that facilitate communication.
- Support and advise staff and help them feel confident on welfare, safeguarding and child protection matters: specifically, to ensure that staff are supported during the referrals processes; and to support staff to consider how safeguarding, welfare and educational outcomes are linked, including to inform the provision of academic and pastoral support.

- Understand the importance of information sharing, including within school, with other schools, and with the safeguarding partners, other agencies, organisations and practitioners.
- Understand relevant data protection legislation and regulations, especially the Data Protection Act 2018 and the UK GDPR.
- Keep detailed, accurate, secure written records of concerns and referrals, and understand the purpose of this record-keeping.

The designated teacher has a responsibility for promoting the educational achievement of LAC and PLAC, and for children who have left care through adoption, special guardianship or child arrangement orders or who were adopted from state care outside England and Wales.

6. Confidentiality

Confidentiality is an issue which needs to be discussed and fully understood by all those working with children, particularly in the context of child protection. The only purpose of confidentiality in this respect is to benefit the child. A member of staff must never guarantee confidentiality to a pupil and will not agree with a pupil to keep a secret as, where there is a child protection concern, this must be reported to the Designated Safeguarding Lead and may require further investigation by appropriate authorities.

Staff are informed of relevant information in respect of individual cases regarding child protection on a 'need to know basis' only. Any information shared with a member of staff in this way is held treated confidentially.

At St Mary's we are know and action that:

- › Timely information sharing is essential to effective safeguarding
- › Fears about sharing information must not be allowed to stand in the way of the need to promote the welfare, and protect the safety, of children
- › The Data Protection Act (DPA) 2018 and UK GDPR do not prevent, or limit, the sharing of information for the purposes of keeping children safe
- › If staff need to share 'special category personal data', the DPA 2018 contains 'safeguarding of children and individuals at risk' as a processing condition that allows practitioners to share information without consent if: it is not possible to gain consent; it cannot be reasonably expected that a practitioner gains consent; or if to gain consent would place a child at risk
- › Staff should never promise a child that they will not tell anyone about a report of abuse, as this may not be in the child's best interests
- › If a victim asks the school not to tell anyone about the sexual violence or sexual harassment:
 - There's no definitive answer, because even if a victim doesn't consent to sharing information, staff may still lawfully share it if there's another legal basis under the UK GDPR that applies
 - The DSL will have to balance the victim's wishes against their duty to protect the victim and other children
 - The DSL will consider that:
 - Parents or carers should normally be informed (unless this would put the victim at greater risk)
 - The basic safeguarding principle is: if a child is at risk of harm, is in immediate danger, or has been harmed, a referral should be made to local authority children's social care
 - Rape, assault by penetration and sexual assault are crimes. Where a report of rape, assault by penetration or sexual assault is made, this should be referred to the police. While the age of criminal responsibility is 10, if the alleged perpetrator is under 10, the starting principle of referring to the police remains

- › Regarding anonymity, all staff will:
 - Be aware of anonymity, witness support and the criminal process in general where an allegation of sexual violence or sexual harassment is progressing through the criminal justice system
 - Do all they reasonably can to protect the anonymity of any children involved in any report of sexual violence or sexual harassment, for example, carefully considering which staff should know about the report, and any support for children involved
 - Consider the potential impact of social media in facilitating the spreading of rumours and exposing victims' identities
- › The government's [information sharing advice for safeguarding practitioners](#) includes 7 'golden rules' for sharing information, and will support staff who have to make decisions about sharing information
- › If staff are in any doubt about sharing information, they should speak to the DSL (or deputy)
- › Confidentiality is also addressed in this policy with respect to record-keeping in section 14, and allegations of abuse against staff in appendix 3

7. Recognising abuse and taking action

Staff, volunteers and governors must follow the procedures set out below in the event of a safeguarding issue. Please note – in this and subsequent sections, you should take any references to the DSL to mean “the DSL (or deputy DSL)”.

7.1 If a child is suffering or likely to suffer harm, or in immediate danger

Make a referral to children's social care and/or the police **immediately** if you believe a child is suffering or likely to suffer from harm, or is in immediate danger. **Anyone can make a referral.**

To refer to children's social care, please contact Thurrock MASH on 01375 652802 (during business hours) or 01375 372468 (out of business hours) ensuring you have written records of the referral you are making, including the child's personal details e.g. full name, address, date of birth, siblings etc.

Ensure that you have told the DSL (see section 5.2) as soon as possible if you make a referral directly and record the referral on CPOMs.

Further information can be found:

<https://www.gov.uk/report-child-abuse-to-local-council>

7.2 If a child makes a disclosure to you

If a child discloses a safeguarding issue to you, you should:

- › Listen to and believe them. Allow them time to talk freely and do not ask leading questions
- › Stay calm and do not show that you are shocked or upset
- › Tell the child they have done the right thing in telling you. Do not tell them they should have told you sooner
- › Explain what will happen next and that you will have to pass this information on. Do not promise to keep it a secret
- › Write up your conversation as soon as possible in the child's own words. Stick to the facts, and do not put your own judgement on it
- › Sign and date the write-up and pass it on to the DSL and then record on to CPOMS.
- › Alternatively, if appropriate, make a referral to children's social care and/or the police directly (see 7.1), and tell the DSL as soon as possible that you have done so. Aside from these people, do not disclose the

information to anyone else unless told to do so by a relevant authority involved in the safeguarding process

Bear in mind that some children may:

- › Not feel ready, or know how to tell someone that they are being abused, exploited or neglected
- › Not recognise their experiences as harmful
- › Feel embarrassed, humiliated or threatened. This could be due to their vulnerability, disability, sexual orientation and/or language barriers

None of this should stop you from having a 'professional curiosity' and speaking to the DSL if you have concerns about a child.

7.3 If you discover that FGM has taken place or a pupil is at risk of FGM

Keeping Children Safe in Education explains that FGM comprises "all procedures involving partial or total removal of the external female genitalia, or other injury to the female genital organs".

FGM is illegal in the UK and a form of child abuse with long-lasting, harmful consequences. It is also known as 'female genital cutting', 'circumcision' or 'initiation'.

Possible indicators that a pupil has already been subjected to FGM, and factors that suggest a pupil may be at risk, are set out in appendix 4 of this policy.

Any teacher who either:

- Is informed by a girl under 18 that an act of FGM has been carried out on her; or
- Observes physical signs which appear to show that an act of FGM has been carried out on a girl under 18 and they have no reason to believe that the act was necessary for the girl's physical or mental health or for purposes connected with labour or birth

Must immediately report this to the police, personally. This is a mandatory statutory duty, and teachers will face disciplinary sanctions for failing to meet it.

Unless they have been specifically told not to disclose, they should also discuss the case with the DSL and involve children's social care as appropriate.

Any other member of staff who discovers that an act of FGM appears to have been carried out on a **pupil under 18** must speak to the DSL and follow our local safeguarding procedures.

The duty for teachers mentioned above does not apply in cases where a pupil is *at risk* of FGM or FGM is suspected but is not known to have been carried out. Staff should not examine pupils.

Any member of staff who suspects a pupil is *at risk* of FGM or suspects that FGM has been carried out should speak to the DSL and follow our local safeguarding procedures by contact the police followed by the MASH team on 01375 652802 (during business hours) or 01375 372468 (out of business hours) .

7.4 If you have concerns about a child (as opposed to believing a child is suffering or likely to suffer from harm, or is in immediate danger)

Figure 1 below, before section 7.7, illustrates the procedure to follow if you have any concerns about a child's welfare.

Where possible, speak to the DSL first to agree a course of action.

If in exceptional circumstances the DSL is not available, this should not delay appropriate action being taken. Speak to the Deputy DSL or a member of the senior leadership team and/or take advice from Thurrock MASH team.

You can also seek advice at any time from the NSPCC helpline on 0808 800 5000. Share details of any actions you take with the DSL as soon as practically possible.

Make a referral to local authority children's social care directly, if appropriate (see 'Referral' below). Share any action taken with the DSL as soon as possible.

Early help assessment

If an early help assessment is appropriate, the DSL will generally lead on liaising with other agencies and setting up an inter-agency assessment as appropriate. Staff may be required to support other agencies and professionals in an early help assessment, in some cases acting as the lead practitioner.

We will discuss and agree, with statutory safeguarding partners, levels for the different types of assessment, as part of local arrangements.

The DSL will keep the case under constant review and the school will consider a referral to local authority children's social care if the situation does not seem to be improving. Timelines of interventions will be monitored and reviewed.

Referral

If it is appropriate to refer the case to local authority children's social care or the police, the DSL will make the referral or support you to do so.

If you make a referral directly (see section 7.1), you must tell the DSL as soon as possible.

The local authority will make a decision within 1 working day of a referral about what course of action to take and will let the person who made the referral know the outcome. The DSL or person who made the referral must follow up with the local authority if this information is not made available, and ensure outcomes are properly recorded.

If the child's situation does not seem to be improving after the referral, the DSL or person who made the referral must follow Thurrock escalation procedures to ensure their concerns have been addressed and that the child's situation improves.

7.5 If you have concerns about extremism

If a child is not suffering or likely to suffer from harm, or in immediate danger, where possible speak to the DSL first to agree a course of action.

If in exceptional circumstances the DSL is not available, this should not delay appropriate action being taken. Speak to the Deputy DSL or a member of the senior leadership team and/or take advice from Thurrock MASH team. Make a referral to local authority children's social care directly, if appropriate (see 'Referral' above). Inform the DSL or deputy as soon as practically possible after the referral.

Where there is a concern, the DSL will consider the level of risk and decide which agency to make a referral to. This could include [Channel](#), the government's programme for identifying and supporting individuals at risk of being drawn into terrorism, or the local authority children's social care team.

The Department for Education also has a dedicated telephone helpline, 020 7340 7264, which school staff and governors can call to raise concerns about extremism with respect to a pupil. You can also email counter.extremism@education.gov.uk. Note that this is not for use in emergency situations.

In an emergency, call 999 or the confidential anti-terrorist hotline on 0800 789 321 if you:

- › Think someone is in immediate danger
- › Think someone may be planning to travel to join an extremist group
- › See or hear something that may be terrorist-related

7.6 If you have a mental health concern

Mental health problems can, in some cases, be an indicator that a child has suffered or is at risk of suffering abuse, neglect or exploitation.

Staff will be alert to behavioural signs that suggest a child may be experiencing a mental health problem or be at risk of developing one.

If you have a mental health concern about a child that is also a safeguarding concern, take immediate action by following the steps in section 7.4.

If you have a mental health concern that is **not** also a safeguarding concern, speak to the DSL to agree a course of action.

7.7 Extra Familial Harm

Extra-familial harm is defined as risks to the welfare of children that arise within the community or peer group, including sexual and criminal exploitation. A key element of extrafamilial harm is that in general, harm does not arise from the home environment; parents may not be aware that their child is at risk or may be struggling to protect their child and the family from harm against exploiters.

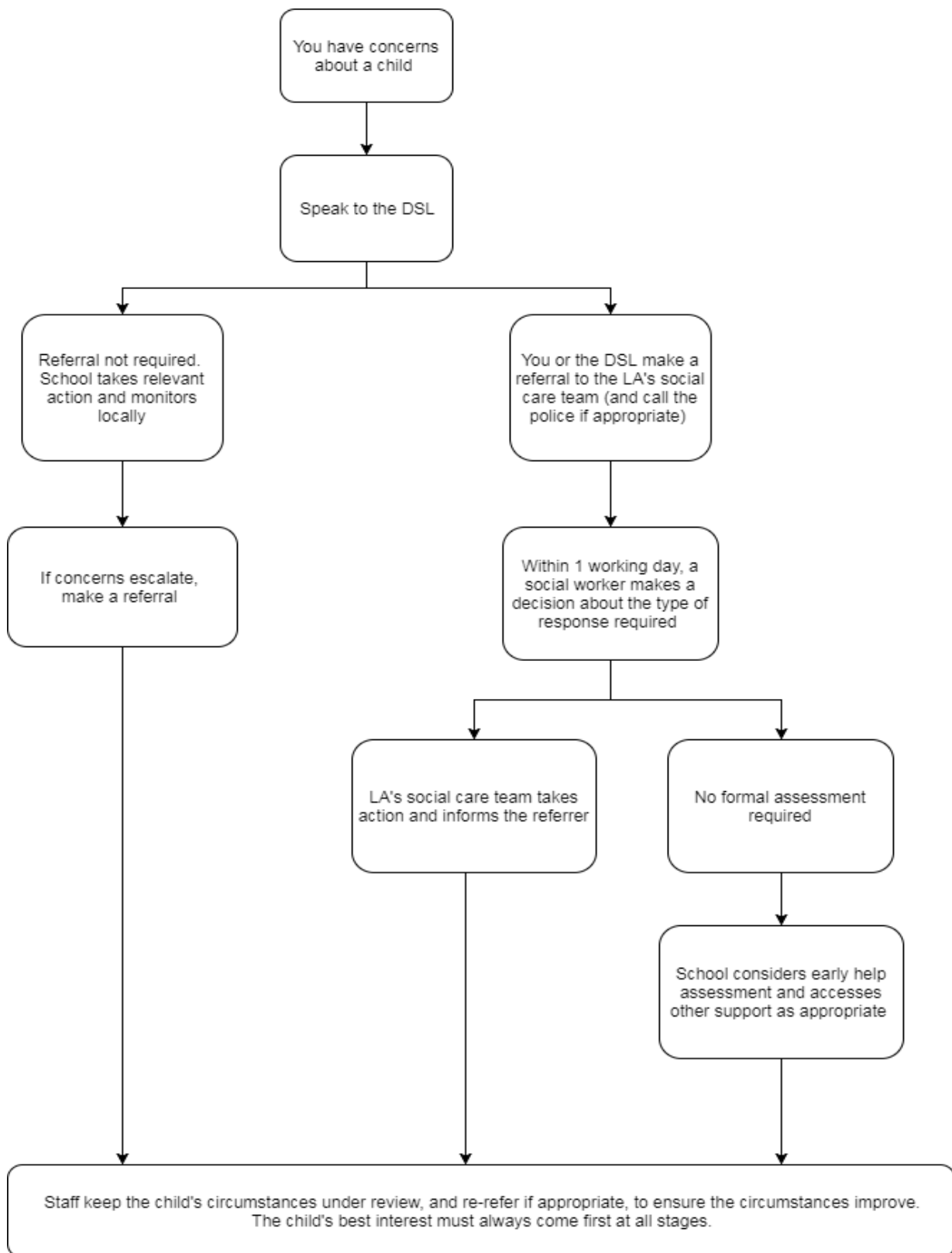
However, sometimes parental neglect and lack of supervision may contribute to the young person's exposure to extra-familial harm. Children who experience difficulties or instability at home may be more likely to spend more time outside of home and hence be more vulnerable to extra-familial harm.

Extra-familial harm can take the form of:

- child sexual exploitation
- child criminal exploitation including drug dealing both locally and through county lines
- modern slavery and trafficking
- gang activity and youth violence
- radicalisation.

Figure 1: procedure if you have concerns about a child’s welfare (as opposed to believing a child is suffering or likely to suffer from harm, or in immediate danger)

(Note – if the DSL is unavailable, this should not delay action. See section 7.4 for what to do.)



7.7 Concerns about a staff member, supply teacher, volunteer or contractor

If you have concerns about a member of staff (including a supply teacher, volunteer or contractor), or an allegation is made about a member of staff (including a supply teacher, volunteer or contractor) posing a risk of harm to children, speak to the headteacher as soon as possible. If the concerns/allegations are about the headteacher, speak to the chair of governors.

The headteacher/chair of governors will then follow the procedures set out in appendix 3, if appropriate.

Where you believe there is a conflict of interest in reporting a concern or allegation about a member of staff (including a supply teacher, volunteer or contractor) to the headteacher, report it directly to the local authority designated officer (LADO).

7.8 Allegations of abuse made against other pupils

We recognise that children are capable of abusing their peers. Abuse will never be tolerated or passed off as “banter”, “just having a laugh” or “part of growing up”, as this can lead to a culture of unacceptable behaviours and an unsafe environment for pupils.

We also recognise the gendered nature of child-on-child abuse. However, all child-on-child abuse is unacceptable and will be taken seriously.

Most cases of pupils hurting other pupils will be dealt with under our school’s behaviour policy, but this child protection and safeguarding policy will apply to any allegations that raise safeguarding concerns. This might include where the alleged behaviour:

- › Is serious, and potentially a criminal offence
- › Could put pupils in the school at risk
- › Is violent
- › Involves pupils being forced to use drugs or alcohol
- › Involves sexual exploitation, sexual abuse or sexual harassment, such as indecent exposure, sexual assault, upskirting or sexually inappropriate pictures or videos (including the sharing of nudes and semi-nudes)

See appendix 4 for more information about child-on-child abuse.

Procedures for dealing with allegations of child-on-child abuse

If a pupil makes an allegation of abuse against another pupil:

- › You must record the allegation on CPOMs and tell the DSL, but do not investigate it
- › The DSL will contact the local authority children’s social care team and follow its advice, as well as the police if the allegation involves a potential criminal offence
- › The DSL will put a risk assessment and support plan into place for all children involved (including the victim(s), the child(ren) against whom the allegation has been made and any others affected) with a named person they can talk to if needed.
- › The DSL will contact the children and adolescent mental health services (CAMHS), if appropriate

If the incident is a criminal offence and there are delays in the criminal process, the DSL will work closely with the police (and other agencies as required) while protecting children and/or taking any disciplinary measures against the alleged perpetrator. We will ask the police if we have any questions about the investigation.

Creating a supportive environment in school and minimising the risk of child-on-child abuse

We recognise the importance of taking proactive action to minimise the risk of child-on-child abuse, and of creating a supportive environment where victims feel confident in reporting incidents.

To achieve this, we will:

- › Challenge any form of derogatory or sexualised language or inappropriate behaviour between peers, including requesting or sending sexual images

- › Be vigilant to issues that particularly affect different genders – for example, sexualised or aggressive touching or grabbing towards female pupils, and initiation or hazing type violence with respect to boys
- › Ensure our curriculum helps to educate pupils about appropriate behaviour and consent
- › Ensure pupils are able to easily and confidently report abuse using our reporting systems (as described in section 7.10 below)
- › Ensure staff reassure victims that they are being taken seriously
- › Be alert to reports of sexual violence and/or harassment that may point to environmental or systemic problems that could be addressed by updating policies, processes and the curriculum, or could reflect wider issues in the local area that should be shared with safeguarding partners
- › Support children who have witnessed sexual violence, especially rape or assault by penetration. We will do all we can to make sure the victim, alleged perpetrator(s) and any witnesses are not bullied or harassed
- › Consider intra familial harms and any necessary support for siblings following a report of sexual violence and/or harassment
- › Ensure staff are trained to understand:
 - How to recognise the indicators and signs of child-on-child abuse, and know how to identify it and respond to reports
 - That even if there are no reports of child-on-child abuse in school, it does not mean it is not happening – staff should maintain an attitude of “it could happen here”
 - That if they have any concerns about a child’s welfare, they should act on them immediately rather than wait to be told, and that victims may not always make a direct report. For example:
 - Children can show signs or act in ways they hope adults will notice and react to
 - A friend may make a report
 - A member of staff may overhear a conversation
 - A child’s behaviour might indicate that something is wrong
 - That certain children may face additional barriers to telling someone because of their vulnerability, disability, gender, ethnicity and/or sexual orientation
 - That a pupil harming a peer could be a sign that the child is being abused themselves, and that this would fall under the scope of this policy
 - The important role they have to play in preventing child-on-child abuse and responding where they believe a child may be at risk from it
 - That they should speak to the DSL if they have any concerns
 - That social media is likely to play a role in the fall-out from any incident or alleged incident, including for potential contact between the victim, alleged perpetrator(s) and friends from either side

The DSL will take the lead role in any disciplining of the alleged perpetrator(s). We will provide support at the same time as taking any disciplinary action.

Disciplinary action can be taken while other investigations are going on, e.g. by the police. The fact that another body is investigating or has investigated an incident doesn’t (in itself) prevent our school from coming to its own conclusion about what happened and imposing a penalty accordingly. We will consider these matters on a case-by-case basis, taking into account whether:

- › Taking action would prejudice an investigation and/or subsequent prosecution – we will liaise with the police and/or LA children’s social care to determine this
- › There are circumstances that make it unreasonable or irrational for us to reach our own view about what happened while an independent investigation is ongoing

7.9 Sharing of nudes and semi-nudes ('sexting')

Your responsibilities when responding to an incident

If you are made aware of an incident involving the consensual or non-consensual sharing of nude or semi-nude images/videos (also known as 'sexting' or 'youth produced sexual imagery'), you must report it to the DSL immediately.

You must **not**:

- › View, copy, print, share, store or save the imagery yourself, or ask a pupil to share or download it (if you have already viewed the imagery by accident, you must report this to the DSL)
- › Delete the imagery or ask the pupil to delete it
- › Ask the pupil(s) who are involved in the incident to disclose information regarding the imagery (this is the DSL's responsibility)
- › Share information about the incident with other members of staff, the pupil(s) it involves or their, or other, parents and/or carers
- › Say or do anything to blame or shame any young people involved

You should explain that you need to report the incident, and reassure the pupil(s) that they will receive support and help from the DSL.

Initial review meeting

Following a report of an incident, the DSL will hold an initial review meeting with appropriate school staff – this may include the staff member who reported the incident and the safeguarding or leadership team that deals with safeguarding concerns. This meeting will consider the initial evidence and aim to determine:

- › Whether there is an immediate risk to pupil(s)
- › If a referral needs to be made to the police and/or children's social care
- › If it is necessary to view the image(s) in order to safeguard the young person (in most cases, images or videos should not be viewed)
- › What further information is required to decide on the best response
- › Whether the image(s) has been shared widely and via what services and/or platforms (this may be unknown)
- › Whether immediate action should be taken to delete or remove images or videos from devices or online services
- › Any relevant facts about the pupils involved which would influence risk assessment
- › If there is a need to contact another school, college, setting or individual
- › Whether to contact parents or carers of the pupils involved (in most cases parents/carers should be involved)

The DSL will make an immediate referral to police and/or children's social care if:

- › The incident involves an adult
- › There is reason to believe that a young person has been coerced, blackmailed or groomed, or if there are concerns about their capacity to consent (for example, owing to special educational needs)
- › What the DSL knows about the images or videos suggests the content depicts sexual acts which are unusual for the young person's developmental stage, or are violent
- › The imagery involves sexual acts and any pupil in the images or videos is under 13
- › The DSL has reason to believe a pupil is at immediate risk of harm owing to the sharing of nudes and semi-nudes (for example, the young person is presenting as suicidal or self-harming)

If none of the above apply then the DSL, in consultation with the headteacher and other members of staff as appropriate, may decide to respond to the incident without involving the police or children's social care. The decision will be made and recorded in line with the procedures set out in this policy.

Further review by the DSL

If at the initial review stage a decision has been made not to refer to police and/or children's social care, the DSL will conduct a further review to establish the facts and assess the risks.

They will hold interviews with the pupils involved (if appropriate).

If at any point in the process there is a concern that a pupil has been harmed or is at risk of harm, a referral will be made to children's social care and/or the police immediately.

Informing parents/carers

The DSL will inform parents/carers at an early stage and keep them involved in the process, unless there is a good reason to believe that involving them would put the pupil at risk of harm.

Referring to the police

If it is necessary to refer an incident to the police, this will be done through our local neighbourhood police service.

Recording incidents

All incidents of sharing of nudes and semi-nudes, and the decisions made in responding to them, will be recorded. The record-keeping arrangements set out in section 14 of this policy also apply to recording these incidents.

7.10 Reporting systems for our pupils

Where there is a safeguarding concern, we will take the child's wishes and feelings into account when determining what action to take and what services to provide.

We recognise the importance of ensuring pupils feel safe and comfortable to come forward and report any concerns and/or allegations.

Children are encouraged to speak to their classteacher or other trusted adult about any concern they may have and reporting concerns they may have either verbally or through writing a note. Each child has the opportunity to nominate 3 special people who they particularly feel comfortable to speak with.

Children will be reassured that their concerns will be taken seriously, and that they can safely express their views and give feedback. It is also explained that their concerns will be passed on as appropriate.

8. Online safety and personal electronic devices

The school will adhere to the Online Safety Policy and mobile phone policy at all times. Both policies can be found on the website.

As part of a broad and balanced curriculum, all pupils will be made aware of online risks and taught how to stay safe online.

Through training, all staff members will be made aware of:

- Pupil attitudes and behaviours which may indicate they are at risk of potential harm online.
- The procedure to follow when they have a concern regarding a pupil's online activity.

The school will ensure that appropriate filtering systems are in place on school devices and school networks to prevent children accessing inappropriate material, in accordance with the school's Cyber-security Policy. The school will, however, ensure that the use of filtering and monitoring systems does not cause "over blocking", which may lead to unreasonable restrictions as to what pupils can be taught online. The school will also ensure that it meets the [filtering and monitoring standards](#) published by the DfE.

Staff will be aware of the filtering and monitoring systems in place and will know how to escalate concerns where they are identified. Staff will be made aware of their expectations and responsibilities relating to filtering and monitoring systems during their induction.

Further information regarding the school's approach to online safety can be found in the Online Safety Policy.

Communicating with parents

As part of the usual communication with parents, the school will reinforce the importance of pupils being safe online and inform parents that they will find it helpful to understand what systems the school uses to filter and monitor internet use.

The school will also make it clear to parents what their children are being asked to do online for school.

Reviewing online safety

The school will carry out an annual review of its approach to online safety, supported by an annual risk assessment that considers and reflects the risks faced by pupils.

Personal electronic devices

The use of personal electronic devices, including mobile phones and cameras, by staff and pupils is closely monitored by the school, in accordance with the Staff ICT and Electronic Devices Policy and Pupils' Personal Electronic Devices Policy.

Photographs and videos of pupils will be carefully planned before any activity with particular regard to consent and adhering to the school's Data Protection Policy and Photography Policy. The DPO will oversee the planning of any events where photographs and videos will be taken.

Where photographs and videos will involve pupils who are LAC, adopted pupils, or pupils for whom there are security concerns, the headteacher will liaise with the DSL to determine the steps involved. The DSL will, in known cases of pupils who are LAC or who have been adopted, liaise with the pupils' social workers, carers or adoptive parents to assess the needs and risks associated with the pupils.

Staff will report any concerns about pupils' or other staff members' use of personal electronic devices to the DSL, following the appropriate procedures.

Upskirting

Under the Voyeurism (Offences) Act 2019, it is an offence to operate equipment for the purpose of upskirting. **"Operating equipment"** includes enabling, or securing, activation by another person without that person's knowledge, e.g. a motion-activated camera.

Upskirting will not be tolerated by the school. Any incidents of upskirting will be reported to the DSL, who will then decide on the next steps to take, which may include police involvement

Please refer to our online safety policy and mobile phone policy, which you can find on our website

9. Notifying parents or carers

Where appropriate, we will discuss any concerns about a child with the child's parents or carers. The DSL will normally do this in the event of a suspicion or disclosure.

Other staff will only talk to parents or carers about any such concerns following consultation with the DSL.

If we believe that notifying the parents or carers would increase the risk to the child, we will discuss this with the local authority children's social care team before doing so.

In the case of allegations of abuse made against other children, we will normally notify the parents or carers of all the children involved. We will think carefully about what information we provide about the other child involved, and when. We will work with the police and/or local authority children's social care to make sure our approach to information sharing is consistent.

The DSL will, along with any relevant agencies (this will be decided on a case-by-case basis):

- › Meet with the victim's parents or carers, with the victim, to discuss what's being put in place to safeguard them, and understand their wishes in terms of what support they may need and how the report will be progressed
- › Meet with the alleged perpetrator's parents or carers to discuss support for them, and what's being put in place that will impact them, e.g. moving them out of classes with the victim, and the reason(s) behind any decision(s)

10. Pupils potentially at greater risk of harm

The school recognises that some groups of pupils can face additional safeguarding challenges, both online and offline, and understands that further barriers may exist when determining abuse and neglect in these groups of pupils. Additional considerations for managing safeguarding concerns and incidents amongst these groups are outlined below.

Pupils who need social workers

Pupils may need social workers due to safeguarding or welfare needs. These needs can leave pupils vulnerable to further harm and educational disadvantage.

As a matter of routine, the DSL will hold and use information from the LA about whether a pupil has a social worker in order to make decisions in the best interests of the pupil's safety, welfare, and educational outcomes.

Where a pupil needs a social worker, this will inform decisions about safeguarding, e.g. responding to unauthorised absence, and promoting welfare, e.g. considering the provision pastoral or academic support.

Home-educated children

Parents may choose elective home education (EHE) for their children. In some cases, EHE can mean that children are less visible to the services needed to safeguard and support them.

In line with the Education (Pupil Registration) (England) Regulations 2006, the school will inform the LA of all deletions from the admissions register when a pupil is taken off roll.

Where a parent has expressed their intention to remove a pupil from school for EHE, the school, in collaboration with the LA and other key professionals, will coordinate a meeting with the parent, where possible, before the final decision has been made, particularly if the pupil has SEND, is vulnerable, and/or has a social worker.

LAC and PLAC

Children most commonly become looked after because of abuse and/or neglect. Because of this, they can be at potentially greater risk in relation to safeguarding. PLAC, also known as care leavers, can also remain vulnerable after leaving care.

The governing board will ensure that staff have the skills, knowledge and understanding to keep LAC and PLAC safe. This includes ensuring that the appropriate staff have the information they need, such as:

- Looked after legal status, i.e. whether they are looked after under voluntary arrangements with consent of parents, or on an interim or full care order.
- Contact arrangements with parents or those with parental responsibility.
- Care arrangements and the levels of authority delegated to the carer by the authority looking after the pupil.

The DSL will be provided with the necessary details of pupils' social workers and the VSH, and, for PLAC, personal advisers.

Further details of safeguarding procedures for LAC and PLAC are outlined in the school's LAC Policy.

Pupils with SEND

When managing safeguarding in relation to pupils with SEND, staff will be aware of the following:

- Certain indicators of abuse, such as behaviour, mood and injury, may relate to the pupil's disability without further exploration; however, it should never be assumed that a pupil's indicators relate only to their disability
- Pupils with SEND can be disproportionately impacted by issues such as bullying, without outwardly showing any signs
- Communication barriers may exist, as well as difficulties in overcoming these barriers

When reporting concerns or making referrals for pupils with SEND, the above factors will always be taken into consideration. When managing a safeguarding issue relating to a pupil with SEND, the DSL will liaise with the school's SENCO, as well as the pupil's parents where appropriate, to ensure that the pupil's needs are met effectively.

LGBTQ+ pupils

The fact that a pupil may be LGBTQ+ is not in itself an inherent risk factor for harm; however, staff will be aware that LGBTQ+ pupils can be targeted by other individuals. Staff will also be aware that, in some cases, a pupil who is perceived by others to be LGBTQ+ (whether they are or not) can be just as vulnerable as pupils who identify as LGBTQ+.

Staff will also be aware that the risks to these pupils can be compounded when they do not have a trusted adult with whom they can speak openly with. Staff will endeavour to reduce the additional barriers faced by these pupils and provide a safe space for them to speak out and share any concerns they have.

Pupils requiring mental health support

All staff will be made aware that mental health problems can, in some cases, be an indicator that a pupil has suffered, or is at risk of suffering, abuse, neglect or exploitation.

- › Work closely with the DSL to ensure that any safeguarding concerns regarding looked-after and previously looked-after children are quickly and effectively responded to
- › Work with virtual school heads to promote the educational achievement of looked-after and previously looked-after children, including discussing how pupil premium plus funding can be best used to support looked-after children and meet the needs identified in their personal education plans

11. Use of School premises for non-school activities

Where the governing board hires or rents out school facilities or the school premises to organisations or individuals, e.g. for providers to run community or extracurricular activities, it will ensure that appropriate safeguarding arrangements are in place to keep pupils safe. The school will refer to the DfE's [guidance](#) on keeping children safe in out-of-school settings in these circumstances.

Where the governing board provides the activities under the direct supervision or management of school staff, child protection arrangements will apply. Where activities are provided separately by another body, this may not be the case; therefore, the governing board will seek assurance that the body concerned has appropriate safeguarding and child protection policies and procedures in place, including inspecting these as needed. The governing board will also ensure that there are arrangements in place to liaise with the school on these matters where appropriate. The governing board will ensure safeguarding requirements are included in any transfer of control agreement, i.e. a lease or hire agreement, as a condition of use and occupation of the premises, and specify that failure to comply with this would lead to termination of the agreement.

Extracurricular activities and clubs

External bodies that host extracurricular activities and clubs at the school, e.g. charities or companies, will work in collaboration with the school to effectively safeguard pupils and adhere to local safeguarding arrangements.

Staff and volunteers running extracurricular activities and clubs are aware of their safeguarding responsibilities and promote the welfare of pupils. Paid and volunteer staff understand how they should respond to child protection concerns and how to make a referral to CSCS or the police, if necessary.

All national governing bodies of sport that receive funding from either Sport England or UK Sport must aim to meet the Standards for Safeguarding and Protecting Children in Sport.

12. Complaints and concerns about school safeguarding policies

12.1 Complaints against staff

Complaints against staff that are likely to require a child protection investigation will be handled in accordance with our procedures for dealing with allegations of abuse made against staff (see appendix 3).

12.2 Other complaints

For all other complains please see the Complaints Policy on the school website.

12.3 Whistle-blowing

If there are concerns regarding the way the school safeguards pupils – including poor or unsafe practice, or potential failures please see the Whistleblowing Policy on the school website.

13. Record-keeping

We will hold records in line with our records retention schedule.

All safeguarding concerns, discussions, decisions made and the reasons for those decisions, must be recorded in writing on CPOMs. If you are in any doubt about whether to record something, discuss it with the DSL.

Records will include:

- › A clear and comprehensive summary of the concern
- › Details of how the concern was followed up and resolved
- › A note of any action taken, decisions reached and the outcome

Concerns and referrals will be kept in a separate child protection file for each child.

Any non-confidential records will be readily accessible and available. Confidential information and records will be held securely and only available to those who have a right or professional need to see them.

Safeguarding records relating to individual children will be retained for a reasonable period of time after they have left the school.

Safeguarding records which contain information about allegations of sexual abuse will be retained for the Independent Inquiry into Child Sexual Abuse (IICSA), for the term of the inquiry.

If a child for whom the school has, or has had, safeguarding concerns moves to another school, the DSL will ensure that their child protection file is forwarded as soon as possible, securely, and separately from the main pupil file.

To allow the new school/college to have support in place when the child arrives, this should be within:

- › **5 days** for an in-year transfer, or within
- › **The first 5 days** of the start of a new term

In addition, if the concerns are significant or complex, and/or social services are involved, the DSL will speak to the DSL of the receiving school and provide information to enable them to have time to make any necessary preparations to ensure the safety of the child.

In addition:

- › Appendix 2 sets out our policy on record-keeping specifically with respect to recruitment and pre-appointment checks

- › Appendix 3 sets out our policy on record-keeping with respect to allegations of abuse made against staff

15. Training

15.1 All staff

Staff members will undergo safeguarding and child protection training at induction, which will be updated on a termly basis and/or whenever there is a change in legislation.

The induction training will cover:

- The Child Protection and Safeguarding Policy.
- The Child-on-child Abuse Policy and procedures.
- The Staff Code of Conduct.
- Part one of 'Keeping children safe in education' (KCSIE) (or Annex A, if appropriate).
- The Behaviour Policy.
- The Children Absent from Education Policy, including the safeguarding response to children who are absent from education.
- Appropriate child protection and safeguarding training, including online safety training – which, amongst other things, includes an understanding of expectations, applicable roles and responsibilities in relation to filtering and monitoring.
- Information about the role and identity of the DSL and deputy DSLs.

All staff members will also receive regular safeguarding and child protection updates as required, but at least annually. Training will cover, at a minimum:

- The issues surrounding sexual violence and sexual harassment.
- Contextual safeguarding.
- How to keep LAC and PLAC safe.
- CCE and the need to refer cases to the National Referral Mechanism.
- Updated online safety training.

Staff will receive opportunities to contribute towards and inform the safeguarding arrangements in the school.

The DSL and deputy DSLs will undergo child protection and safeguarding training, and update this training at least every two years. The DSL and deputy DSLs will also obtain access to resources and attend any relevant or refresher training courses, ensuring they keep up-to-date with any developments relevant to their role. This will include training to understand:

- The assessment process for providing early help and statutory intervention, including local criteria for action and CSCS referral arrangements.
- How LAs conduct child protection case conferences and a child protection review conferences, to enable the DSL to attend and contribute to these effectively when required.
- The importance of providing information and support to CSCS.
- The lasting impact that adversity and trauma can have.
- How to be alert to the specific needs of children in need, pupils with SEND and/or relevant health conditions, and young carers.
- The importance of internal and external information sharing.
- The Prevent duty.
- The risks associated with online safety, including the additional risks faced online by pupils with SEND.

Contractors who are provided through a private finance initiative (PFI) or similar contract will also receive safeguarding training.

Volunteers will receive appropriate training, if applicable.

15.2 The DSL and deputies

The DSL and deputies will undertake child protection and safeguarding training at least every 2 years.

In addition, they will update their knowledge and skills at regular intervals and at least annually (for example, through e-bulletins, meeting other DSLs, or taking time to read and digest safeguarding developments).

They will also undertake Prevent awareness training.

15.3 Governors

All governors receive training about safeguarding and child protection (including online safety) at induction, which is regularly updated. This is to make sure that they:

- › Have the knowledge and information needed to perform their functions and understand their responsibilities, such as providing strategic challenge
- › Can be assured that safeguarding policies and procedures are effective and support the school to deliver a robust whole-school approach to safeguarding

As the chair of governors may be required to act as the 'case manager' in the event that an allegation of abuse is made against the headteacher, they receive training in managing allegations for this purpose.

15.4 Recruitment – interview panels

At least 1 person conducting any interview for any post at the school will have undertaken safer recruitment training. This will cover, as a minimum, the contents of Keeping Children Safe in Education, and will be in line with local safeguarding procedures.

See appendix 2 of this policy for more information about our safer recruitment procedures.

16. Monitoring arrangements

This policy will be reviewed **annually** by the headteacher. At every review, it will be approved by the full governing board.

17. Links with other policies

This policy links to the following policies and procedures:

- › Behaviour
- › Staff Code of conduct
- › Complaints
- › Health and safety
- › Attendance
- › Online safety including Acceptable Use
- › Mobile phone use
- › Equality
- › Relationships and sex education
- › First aid
- › Curriculum
- › Designated teacher for looked-after and previously looked-after children

- › Privacy notices
- › Whistleblowing

These appendices are based on the Department for Education's statutory guidance, Keeping Children Safe in Education.

Appendix 1: types of abuse

Abuse, including neglect, and safeguarding issues are rarely standalone events that can be covered by 1 definition or label. In most cases, multiple issues will overlap.

Physical abuse may involve hitting, shaking, throwing, poisoning, burning or scalding, drowning, suffocating or otherwise causing physical harm to a child. Physical harm may also be caused when a parent or carer fabricates the symptoms of, or deliberately induces, illness in a child.

Emotional abuse is the persistent emotional maltreatment of a child such as to cause severe and adverse effects on the child's emotional development. Some level of emotional abuse is involved in all types of maltreatment of a child, although it may occur alone.

Emotional abuse may involve:

- › Conveying to a child that they are worthless or unloved, inadequate, or valued only insofar as they meet the needs of another person
- › Not giving the child opportunities to express their views, deliberately silencing them or 'making fun' of what they say or how they communicate
- › Age or developmentally inappropriate expectations being imposed on children. These may include interactions that are beyond a child's developmental capability, as well as overprotection and limitation of exploration and learning, or preventing the child participating in normal social interaction
- › Seeing or hearing the ill-treatment of another
- › Serious bullying (including cyber-bullying), causing children frequently to feel frightened or in danger, or the exploitation or corruption of children

Sexual abuse involves forcing or enticing a child or young person to take part in sexual activities, not necessarily involving a high level of violence, whether or not the child is aware of what is happening. The activities may involve:

- › Physical contact, including assault by penetration (for example, rape or oral sex) or non-penetrative acts such as masturbation, kissing, rubbing and touching outside of clothing
- › Non-contact activities, such as involving children in looking at, or in the production of, sexual images, watching sexual activities, encouraging children to behave in sexually inappropriate ways, or grooming a child in preparation for abuse (including via the internet)

Sexual abuse is not solely perpetrated by adult males. Women can also commit acts of sexual abuse, as can other children.

Neglect is the persistent failure to meet a child's basic physical and/or psychological needs, likely to result in the serious impairment of the child's health or development. Neglect may occur during pregnancy as a result of maternal substance abuse.

Once a child is born, neglect may involve a parent or carer failing to:

- › Provide adequate food, clothing and shelter (including exclusion from home or abandonment)
- › Protect a child from physical and emotional harm or danger
- › Ensure adequate supervision (including the use of inadequate care-givers)
- › Ensure access to appropriate medical care or treatment

It may also include neglect of, or unresponsiveness to, a child's basic emotional needs.

Appendix 2: safer recruitment and DBS checks – policy and procedures

Recruitment and selection process

To make sure we recruit suitable people, we will ensure that those involved in the recruitment and employment of staff to work with children have received appropriate safer recruitment training.

We have put the following steps in place during our recruitment and selection process to ensure we are committed to safeguarding and promoting the welfare of children.

Advertising

When advertising roles, we will make clear:

- › Our school's commitment to safeguarding and promoting the welfare of children
- › That safeguarding checks will be undertaken
- › The safeguarding requirements and responsibilities of the role, such as the extent to which the role will involve contact with children
- › Whether or not the role is exempt from the Rehabilitation of Offenders Act 1974 and the amendments to the Exceptions Order 1975, 2013 and 2020. If the role is exempt, certain spent convictions and cautions are 'protected', so they do not need to be disclosed, and if they are disclosed, we cannot take them into account

Application forms

Our application forms will:

- › Include a statement saying that it is an offence to apply for the role if an applicant is barred from engaging in regulated activity relevant to children (where the role involves this type of regulated activity)
- › Include a copy of, or link to, our child protection and safeguarding policy and our policy on the employment of ex-offenders

Shortlisting

Our shortlisting process will involve at least 2 people and will:

- › Consider any inconsistencies and look for gaps in employment and reasons given for them
- › Explore all potential concerns

Once we have shortlisted candidates, we will ask shortlisted candidates to:

- › Complete a self-declaration of their criminal record or any information that would make them unsuitable to work with children, so that they have the opportunity to share relevant information and discuss it at interview stage. The information we will ask for includes:
 - If they have a criminal history
 - Whether they are included on the barred list
 - Whether they are prohibited from teaching
 - Information about any criminal offences committed in any country in line with the law as applicable in England and Wales
 - Any relevant overseas information
- › Sign a declaration confirming the information they have provided is true

We will also consider carrying out an online search on shortlisted candidates to help identify any incidents or issues that are publicly available online.

Seeking references and checking employment history

We will obtain references before interview. Any concerns raised will be explored further with referees and taken up with the candidate at interview.

When seeking references we will:

- › Not accept open references
- › Liaise directly with referees and verify any information contained within references with the referees
- › Ensure any references are from the candidate's current employer and completed by a senior person. Where the referee is school based, we will ask for the reference to be confirmed by the headteacher/principal as accurate in respect to disciplinary investigations
- › Obtain verification of the candidate's most recent relevant period of employment if they are not currently employed
- › Secure a reference from the relevant employer from the last time the candidate worked with children if they are not currently working with children
- › Compare the information on the application form with that in the reference and take up any inconsistencies with the candidate
- › Resolve any concerns before any appointment is confirmed

Interview and selection

When interviewing candidates, we will:

- › Probe any gaps in employment, or where the candidate has changed employment or location frequently, and ask candidates to explain this
- › Explore any potential areas of concern to determine the candidate's suitability to work with children
- › Record all information considered and decisions made

Pre-appointment vetting checks

We will record all information on the checks carried out in the school's single central record (SCR). Copies of these checks, where appropriate, will be held in individuals' personnel files. We follow requirements and best practice in retaining copies of these checks, as set out below.

New staff

All offers of appointment will be conditional until satisfactory completion of the necessary pre-employment checks. When appointing new staff, we will:

- › Verify their identity
- › Obtain (via the applicant) an enhanced DBS certificate, including barred list information for those who will be engaging in regulated activity (see definition below). We will obtain the certificate before, or as soon as practicable after, appointment, including when using the DBS update service. We will not keep a copy of the certificate for longer than 6 months, but when the copy is destroyed we may still keep a record of the fact that vetting took place, the result of the check and recruitment decision taken
- › Obtain a separate barred list check if they will start work in regulated activity before the DBS certificate is available
- › Verify their mental and physical fitness to carry out their work responsibilities
- › Verify their right to work in the UK. We will keep a copy of this verification for the duration of the member of staff's employment and for 2 years afterwards
- › Verify their professional qualifications, as appropriate
- › Ensure they are not subject to a prohibition order if they are employed to be a teacher
- › Carry out further additional checks, as appropriate, on candidates who have lived or worked outside of the UK. These could include, where available:
 - For all staff, including teaching positions: [criminal records checks for overseas applicants](#)
 - For teaching positions: obtaining a letter from the professional regulating authority in the country where the applicant has worked, confirming that they have not imposed any sanctions

or restrictions on that person, and/or are aware of any reason why that person may be unsuitable to teach

- › Check that candidates taking up a management position* are not subject to a prohibition from management (section 128) direction made by the secretary of state

* Management positions are most likely to include, but are not limited to, headteachers, principals and deputy/assistant headteachers.

We will ensure that appropriate checks are carried out to ensure that individuals are not disqualified under the 2018 Childcare Disqualification Regulations and Childcare Act 2006. Where we take a decision that an individual falls outside of the scope of these regulations and we do not carry out such checks, we will retain a record of our assessment on the individual's personnel file. This will include our evaluation of any risks and control measures put in place, and any advice sought.

Regulated activity means a person who will be:

- › Responsible, on a regular basis in a school or college, for teaching, training, instructing, caring for or supervising children; or
- › Carrying out paid, or unsupervised unpaid, work regularly in a school or college where that work provides an opportunity for contact with children; or
- › Engaging in intimate or personal care or overnight activity, even if this happens only once and regardless of whether they are supervised or not

Existing staff

In certain circumstances we will carry out all the relevant checks on existing staff as if the individual was a new member of staff. These circumstances are when:

- › There are concerns about an existing member of staff's suitability to work with children; or
- › An individual moves from a post that is not regulated activity to one that is; or
- › There has been a break in service of 12 weeks or more

We will refer to the DBS anyone who has harmed, or poses a risk of harm, to a child or vulnerable adult where:

- › We believe the individual has engaged in [relevant conduct](#); or
- › We believe the individual has received a caution or conviction for a relevant (automatic barring either with or without the right to make representations) offence, under the [Safeguarding Vulnerable Groups Act 2006 \(Prescribed Criteria and Miscellaneous Provisions\) Regulations 2009](#); or
- › We believe the 'harm test' is satisfied in respect of the individual (i.e. they may harm a child or vulnerable adult or put them at risk of harm); and
- › The individual has been removed from working in regulated activity (paid or unpaid) or would have been removed if they had not left

Agency and third-party staff

We will obtain written notification from any agency or third-party organisation that it has carried out the necessary safer recruitment checks that we would otherwise perform. We will also check that the person presenting themselves for work is the same person on whom the checks have been made.

Contractors

We will ensure that any contractor, or any employee of the contractor, who is to work at the school has had the appropriate level of DBS check (this includes contractors who are provided through a PFI or similar contract). This will be:

- › An enhanced DBS check with barred list information for contractors engaging in regulated activity
- › An enhanced DBS check, not including barred list information, for all other contractors who are not in regulated activity but whose work provides them with an opportunity for regular contact with children

We will obtain the DBS check for self-employed contractors.

We will not keep copies of such checks for longer than 6 months.

Contractors who have not had any checks will not be allowed to work unsupervised or engage in regulated activity under any circumstances.

We will check the identity of all contractors and their staff on arrival at the school.

For self-employed contractors such as music teachers or sports coaches, we will ensure that appropriate checks are carried out to ensure that individuals are not disqualified under the 2018 Childcare Disqualification Regulations and Childcare Act 2006. Where we decide that an individual falls outside of the scope of these regulations and we do not carry out such checks, we will retain a record of our assessment. This will include our evaluation of any risks and control measures put in place, and any advice sought.

Trainee/student teachers

Where applicants for initial teacher training are salaried by us, we will ensure that all necessary checks are carried out.

Where trainee teachers are fee-funded, we will obtain written confirmation from the training provider that necessary checks have been carried out and that the trainee has been judged by the provider to be suitable to work with children.

In both cases, this includes checks to ensure that individuals are not disqualified under the 2018 Childcare Disqualification Regulations and Childcare Act 2006.

Volunteers

We will:

- › Never leave an unchecked volunteer unsupervised or allow them to work in regulated activity
- › Obtain an enhanced DBS check with barred list information for all volunteers who are new to working in regulated activity
- › Carry out a risk assessment when deciding whether to seek an enhanced DBS check without barred list information for any volunteers not engaging in regulated activity. We will retain a record of this risk assessment
- › Ensure that appropriate checks are carried out to ensure that individuals are not disqualified under the 2018 Childcare Disqualification Regulations and Childcare Act 2006. Where we decide that an individual falls outside of the scope of these regulations and we do not carry out such checks, we will retain a record of our assessment. This will include our evaluation of any risks and control measures put in place, and any advice sought

Governors and members

All governors will have an enhanced DBS check without barred list information.

They will have an enhanced DBS check with barred list information if working in regulated activity.

Academies (including free schools), and independent schools, add:

The chair of the board will have their DBS check countersigned by the secretary of state.

All proprietors, trustees, local governors and members will also have the following checks:

- › Identity
- › Right to work in the UK
- › Other checks deemed necessary if they have lived or worked outside the UK

Appendix 3: allegations of abuse made against staff

Section 1: allegations that may meet the harms threshold

This section applies to all cases in which it is alleged that a current member of staff, including a supply teacher, volunteer or contractor, has:

- › Behaved in a way that has harmed a child, or may have harmed a child, and/or
- › Possibly committed a criminal offence against or related to a child, and/or
- › Behaved towards a child or children in a way that indicates they may pose a risk of harm to children, and/or
- › Behaved or may have behaved in a way that indicates they may not be suitable to work with children – this includes behaviour taking place both inside and outside of school

If we're in any doubt as to whether a concern meets the harm threshold, we will consult our local authority designated officer (LADO).

We will deal with any allegation of abuse quickly, in a fair and consistent way that provides effective child protection while also supporting the individual who is the subject of the allegation.

A 'case manager' will lead any investigation. This will be the headteacher, or the chair of governors where the headteacher is the subject of the allegation. The case manager will be identified at the earliest opportunity.

Our procedures for dealing with allegations will be applied with common sense and judgement.

Suspension of the accused until the case is resolved

Suspension of the accused will not be the default position, and will only be considered in cases where there is reason to suspect that a child or other children is/are at risk of harm, or the case is so serious that there might be grounds for dismissal. In such cases, we will only suspend an individual if we have considered all other options available and there is no reasonable alternative.

Based on an assessment of risk, we will consider alternatives such as:

- › Redeployment within the school so that the individual does not have direct contact with the child or children concerned
- › Providing an assistant to be present when the individual has contact with children
- › Redeploying the individual to alternative work in the school so that they do not have unsupervised access to children
- › Moving the child or children to classes where they will not come into contact with the individual, making it clear that this is not a punishment and parents/carers have been consulted
- › Temporarily redeploying the individual to another role in a different location, for example to an alternative school or other work for the academy trust

If in doubt, the case manager will seek views from the school's personnel adviser and the designated officer at the local authority, as well as the police and children's social care where they have been involved.

Definitions for outcomes of allegation investigations

- › **Substantiated:** there is sufficient evidence to prove the allegation
- › **Malicious:** there is sufficient evidence to disprove the allegation and there has been a deliberate act to deceive, or to cause harm to the subject of the allegation
- › **False:** there is sufficient evidence to disprove the allegation
- › **Unsubstantiated:** there is insufficient evidence to either prove or disprove the allegation (this does not imply guilt or innocence)
- › **Unfounded:** to reflect cases where there is no evidence or proper basis which supports the allegation being made

Procedure for dealing with allegations

In the event of an allegation that meets the criteria above, the case manager will take the following steps:

- › Conduct basic enquiries in line with local procedures to establish the facts to help determine whether there is any foundation to the allegation before carrying on with the steps below
- › Discuss the allegation with the designated officer at the local authority. This is to consider the nature, content and context of the allegation and agree a course of action, including whether further enquiries are necessary to enable a decision on how to proceed, and whether it is necessary to involve the police and/or children's social care services. (The case manager may, on occasion, consider it necessary to involve the police *before* consulting the designated officer – for example, if the accused individual is deemed to be an immediate risk to children or there is evidence of a possible criminal offence. In such cases, the case manager will notify the designated officer as soon as practicably possible after contacting the police)
- › Inform the accused individual of the concerns or allegations and likely course of action as soon as possible after speaking to the designated officer (and the police or children's social care services, where necessary). Where the police and/or children's social care services are involved, the case manager will only share such information with the individual as has been agreed with those agencies
- › Where appropriate (in the circumstances described above), carefully consider whether suspension of the individual from contact with children at the school is justified or whether alternative arrangements such as those outlined above can be put in place. Advice will be sought from the designated officer, police and/or children's social care services, as appropriate
- › Where the case manager is concerned about the welfare of other children in the community or the individual's family, they will discuss these concerns with the DSL and make a risk assessment of the situation. If necessary, the DSL may make a referral to children's social care
- › **If immediate suspension is considered necessary**, agree and record the rationale for this with the designated officer. The record will include information about the alternatives to suspension that have been considered, and why they were rejected. Written confirmation of the suspension will be provided to the individual facing the allegation or concern within 1 working day, and the individual will be given a named contact at the school and their contact details
- › **If it is decided that no further action is to be taken** in regard to the subject of the allegation or concern, record this decision and the justification for it and agree with the designated officer what information should be put in writing to the individual and by whom, as well as what action should follow both in respect of the individual and those who made the initial allegation
- › **If it is decided that further action is needed**, take steps as agreed with the designated officer to initiate the appropriate action in school and/or liaise with the police and/or children's social care services as appropriate
- › Provide effective support for the individual facing the allegation or concern, including appointing a named representative to keep them informed of the progress of the case and considering what other support is appropriate
- › Inform the parents or carers of the child/children involved about the allegation as soon as possible if they do not already know (following agreement with children's social care services and/or the police, if applicable). The case manager will also inform the parents or carers of the requirement to maintain confidentiality about any allegations made against teachers (where this applies) while investigations are ongoing. Any parent or carer who wishes to have the confidentiality restrictions removed in respect of a teacher will be advised to seek legal advice
- › Keep the parents or carers of the child/children involved informed of the progress of the case (only in relation to their child – no information will be shared regarding the staff member)
- › Make a referral to the DBS where it is thought that the individual facing the allegation or concern has engaged in conduct that harmed or is likely to harm a child, or if the individual otherwise poses a risk of harm to a child

If the school is made aware that the secretary of state has made an interim prohibition order in respect of an individual, we will immediately suspend that individual from teaching, pending the findings of the investigation by the Teaching Regulation Agency.

Where the police are involved, wherever possible the school will ask the police at the start of the investigation to obtain consent from the individuals involved to share their statements and evidence for use in the school's disciplinary process, should this be required at a later point.

Additional considerations for supply teachers and all contracted staff

If there are concerns or an allegation is made against someone not directly employed by the school, such as a supply teacher or contracted staff member provided by an agency, we will take the actions below in addition to our standard procedures.

- › We will not decide to stop using an individual due to safeguarding concerns without finding out the facts and liaising with our LADO to determine a suitable outcome
- › The governing board will discuss with the agency whether it is appropriate to suspend the individual, or redeploy them to another part of the school, while the school carries out the investigation
- › We will involve the agency fully, but the school will take the lead in collecting the necessary information and providing it to the LADO as required
- › We will address issues such as information sharing, to ensure any previous concerns or allegations known to the agency are taken into account (we will do this, for example, as part of the allegations management meeting or by liaising directly with the agency where necessary)

When using an agency, we will inform them of our process for managing allegations, and keep them updated about our policies as necessary, and will invite the agency's HR manager or equivalent to meetings as appropriate.

Timescales

We will deal with all allegations as quickly and effectively as possible and will endeavour to comply with the following timescales, where reasonably practicable:

- › Any cases where it is clear immediately that the allegation is unsubstantiated or malicious should be resolved within 1 week
- › If the nature of an allegation does not require formal disciplinary action, appropriate action should be taken within 3 working days
- › If a disciplinary hearing is required and can be held without further investigation, this should be held within 15 working days

However, these are objectives only and where they are not met, we will endeavour to take the required action as soon as possible thereafter.

Specific actions

Action following a criminal investigation or prosecution

The case manager will discuss with the local authority's designated officer whether any further action, including disciplinary action, is appropriate and, if so, how to proceed, taking into account information provided by the police and/or children's social care services.

Conclusion of a case where the allegation is substantiated

If the allegation is substantiated and the individual is dismissed or the school ceases to use their services, or the individual resigns or otherwise ceases to provide their services, the school will make a referral to the DBS for consideration of whether inclusion on the barred lists is required.

If the individual concerned is a member of teaching staff, the school will consider whether to refer the matter to the Teaching Regulation Agency to consider prohibiting the individual from teaching.

Individuals returning to work after suspension

If it is decided on the conclusion of a case that an individual who has been suspended can return to work, the case manager will consider how best to facilitate this.

The case manager will also consider how best to manage the individual's contact with the child or children who made the allegation, if they are still attending the school.

Unsubstantiated, unfounded, false or malicious reports

If a report is:

- › Determined to be unsubstantiated, unfounded, false or malicious, the DSL will consider the appropriate next steps. If they consider that the child and/or person who made the allegation is in need of help, or the allegation may have been a cry for help, a referral to children's social care may be appropriate
- › Shown to be deliberately invented, or malicious, the school will consider whether any disciplinary action is appropriate against the individual(s) who made it

Unsubstantiated, unfounded, false or malicious allegations

If an allegation is:

- › Determined to be unsubstantiated, unfounded, false or malicious, the LADO and case manager will consider the appropriate next steps. If they consider that the child and/or person who made the allegation is in need of help, or the allegation may have been a cry for help, a referral to children's social care may be appropriate
- › Shown to be deliberately invented, or malicious, the school will consider whether any disciplinary action is appropriate against the individual(s) who made it

Confidentiality and information sharing

The school will make every effort to maintain confidentiality and guard against unwanted publicity while an allegation is being investigated or considered.

The case manager will take advice from the LADO, police and children's social care services, as appropriate, to agree:

- Who needs to know about the allegation and what information can be shared
- How to manage speculation, leaks and gossip, including how to make parents or carers of a child/children involved aware of their obligations with respect to confidentiality
- What, if any, information can be reasonably given to the wider community to reduce speculation
- How to manage press interest if, and when, it arises

Record-keeping

The case manager will maintain clear records about any case where the allegation or concern meets the criteria above and store them on the individual's confidential personnel file for the duration of the case.

The records of any allegation that, following an investigation, is found to be malicious or false will be deleted from the individual's personnel file (unless the individual consents for the records to be retained on the file).

For all other allegations (which are not found to be malicious or false), the following information will be kept on the file of the individual concerned:

- A clear and comprehensive summary of the allegation
- Details of how the allegation was followed up and resolved
- Notes of any action taken, decisions reached and the outcome
- A declaration on whether the information will be referred to in any future reference

In these cases, the school will provide a copy to the individual, in agreement with children's social care or the police as appropriate.

Where records contain information about allegations of sexual abuse, we will preserve these for the Independent Inquiry into Child Sexual Abuse (IICSA), for the term of the inquiry. We will retain all other records at least until the individual has reached normal pension age, or for 10 years from the date of the allegation if that is longer.

References

When providing employer references, we will:

- › Not refer to any allegation that has been found to be false, unfounded, unsubstantiated or malicious, or any repeated allegations which have all been found to be false, unfounded, unsubstantiated or malicious
- › Include substantiated allegations, provided that the information is factual and does not include opinions

Learning lessons

After any cases where the allegations are *substantiated*, the case manager will review the circumstances of the case with the local authority's designated officer to determine whether there are any improvements that we can make to the school's procedures or practice to help prevent similar events in the future.

This will include consideration of (as applicable):

- Issues arising from the decision to suspend the member of staff
- The duration of the suspension
- Whether or not the suspension was justified
- The use of suspension when the individual is subsequently reinstated. We will consider how future investigations of a similar nature could be carried out without suspending the individual

For all other cases, the case manager will consider the facts and determine whether any improvements can be made.

Non-recent allegations

Abuse can be reported, no matter how long ago it happened.

We will report any non-recent allegations made by a child to the LADO in line with our local authority's procedures for dealing with non-recent allegations.

Where an adult makes an allegation to the school that they were abused as a child, we will advise the individual to report the allegation to the police.

Section 2: concerns that do not meet the harm threshold

This section applies to all concerns (including allegations) about members of staff, including supply teachers, volunteers and contractors, which do not meet the harm threshold set out in section 1 above.

Concerns may arise through, for example:

- › Suspicion
- › Complaint
- › Safeguarding concern or allegation from another member of staff
- › Disclosure made by a child, parent or other adult within or outside the school
- › Pre-employment vetting checks

We recognise the importance of responding to and dealing with any concerns in a timely manner to safeguard the welfare of children.

Definition of low-level concerns

The term 'low-level' concern is any concern – no matter how small – that an adult working in or on behalf of the school may have acted in a way that:

- › Is inconsistent with the staff code of conduct, including inappropriate conduct outside of work, **and**
- › Does not meet the allegations threshold or is otherwise not considered serious enough to consider a referral to the designated officer at the local authority

Examples of such behaviour could include, but are not limited to:

- › Being overly friendly with children
- › Having favourites
- › Taking photographs of children on their mobile phone
- › Engaging with a child on a one-to-one basis in a secluded area or behind a closed door
- › Humiliating pupils

Sharing low-level concerns

We recognise the importance of creating a culture of openness, trust and transparency to encourage all staff to confidentially share low-level concerns so that they can be addressed appropriately.

We will create this culture by:

- › Ensuring staff are clear about what appropriate behaviour is, and are confident in distinguishing expected and appropriate behaviour from concerning, problematic or inappropriate behaviour, in themselves and others
- › Empowering staff to share any low-level concerns as per section 7.7 of this policy
- › Empowering staff to self-refer
- › Addressing unprofessional behaviour and supporting the individual to correct it at an early stage
- › Providing a responsive, sensitive and proportionate handling of such concerns when they are raised
- › Helping to identify any weakness in the school's safeguarding system

Responding to low-level concerns

If the concern is raised via a third party, the headteacher will collect evidence where necessary by speaking:

- › Directly to the person who raised the concern, unless it has been raised anonymously
- › To the individual involved and any witnesses

The headteacher will use the information collected to categorise the type of behaviour and determine any further action, in line with the school's staff code of conduct. The headteacher will be the ultimate decision-maker in respect of all low-level concerns, though they may wish to collaborate with the DSL.

Please see [Developing and implementing a low-level concerns policy: A guide for organisations which work with children](#) for further detail.

Record keeping

All low-level concerns will be recorded in writing. In addition to details of the concern raised, records will include the context in which the concern arose, any action taken and the rationale for decisions and action taken.

Records will be:

- › Kept confidential, held securely and comply with the DPA 2018 and UK GDPR
- › Reviewed so that potential patterns of concerning, problematic or inappropriate behaviour can be identified. Where a pattern of such behaviour is identified, we will decide on a course of action, either through our disciplinary procedures or, where a pattern of behaviour moves from a concern to meeting the

harms threshold as described in section 1 of this appendix, we will refer it to the designated officer at the local authority

- › Retained at least until the individual leaves employment at the school

Where a low-level concern relates to a supply teacher or contractor, we will notify the individual's employer, so any potential patterns of inappropriate behaviour can be identified.

References

We will not include low-level concerns in references unless:

- › The concern (or group of concerns) has met the threshold for referral to the designated officer at the local authority and is found to be substantiated; and/or
- › The concern (or group of concerns) relates to issues which would ordinarily be included in a reference, such as misconduct or poor performance

Appendix 4: specific safeguarding issues

Children absent from education

A child who is absent from school can be a vital warning sign of a range of safeguarding issues, including neglect, CSE and CCE, particularly county lines. The school will ensure that the response to children persistently being absent from education supports identifying such abuse and helps prevent the risk of pupils becoming absent from education in the future. Staff will monitor pupils that are absent from the school, particularly on repeat occasions and/or prolonged periods, and report them to the DSL following normal safeguarding procedures, in accordance with the Children Absent from Education Policy. The school will inform the LA of any pupil who fails to attend regularly or has been absent without the school's permission for a continuous period of 10 school days or more.

The school will follow the DfE's [guidance](#) on improving attendance where there is a need to work with children's services due to school absences indicating safeguarding concerns.

Admissions register

Pupils are placed on the admissions register at the beginning of the first day that is agreed by the school, or when the school has been notified that the pupil will first be attending. The school will notify the LA within 5 days of when a pupil's name is added to the admissions register.

The school will ensure that the admissions register is kept up-to-date and accurate at all times and will inform parents when any changes occur. Two emergency contacts will be held for each pupil where possible. Staff will monitor pupils who do not attend the school on the agreed date and will notify the LA at the earliest opportunity.

If a parent notifies the school that their child will live at a different address, the school will record the following information on the admissions register:

- The full name of the parent with whom the pupil will live
- The new address
- The date from when the pupil will live at that address

If a parent notifies the school that their child will be attending a different school, or is already registered at a different school, the following information will be recorded on the admissions register:

- The name of the new school
- The date on which the pupil first attended, or is due to attend, that school

Where a pupil moves to a new school, the school will use a secure internet system to securely transfer pupils' data.

To ensure accurate data is collected to allow effective safeguarding, the school will inform the LA of any pupil who is going to be deleted from the admission register, in accordance with the Education (Pupil Registration) (England) Regulations 2006 (as amended), where they:

- Have been taken out of the school by their parents, and are being educated outside the national education system, e.g. home education.
- Have ceased to attend the school, and no longer live within a reasonable distance of the premises.
- Have been certified by the school's medical officer as unlikely to be in a fit state of health to attend, before ceasing to be of compulsory school age, and their parent has not indicated the intention to the pupil continuing to attend school after ceasing to be of compulsory school age.
- Have been in custody for a period of more than four months due to a final court order and the school does not reasonably believe they will be returning to the school at the end of that period.
- Have been permanently excluded.

The school will also remove a pupil from the admissions register where the school and LA has been unable to establish the pupil's whereabouts after making reasonable enquiries into their attendance.

If a pupil is to be removed from the admissions register, the school will provide the LA with the following information:

- The full name of the pupil
- The full name and address of any parent with whom the pupil lives
- At least one telephone number of the parent with whom the pupil lives
- The full name and address of the parent with whom the pupil is going to live, and the date that the pupil will start living there, if applicable
- The name of the pupil's new school and the pupil's expected start date there, if applicable
- The grounds for removal from the admissions register under regulation 8 of the Education (Pupil Registration) (England) Regulations 2006 (as amended)

The school will work with the LA to establish methods of making returns for pupils back into the school. The school will highlight to the LA where they have been unable to obtain necessary information from parents, e.g. where an address is unknown. The school will also highlight any other necessary contextual information, including safeguarding concerns.

Child criminal exploitation

Child criminal exploitation (CCE) is a form of abuse where an individual or group takes advantage of an imbalance of power to coerce, control, manipulate or deceive a child into criminal activity, in exchange for something the victim needs or wants, and/or for the financial or other advantage of the perpetrator or facilitator, and/or through violence or the threat of violence.

The abuse can be perpetrated by males or females, and children or adults. It can be a one-off occurrence or a series of incidents over time, and range from opportunistic to complex organised abuse.

The victim can be exploited even when the activity appears to be consensual. It does not always involve physical contact and can happen online. For example, young people may be forced to work in cannabis factories, coerced into moving drugs or money across the country (county lines), forced to shoplift or pickpocket, or to threaten other young people.

Indicators of CCE can include a child:

- › Appearing with unexplained gifts or new possessions
- › Associating with other young people involved in exploitation
- › Suffering from changes in emotional wellbeing
- › Misusing drugs and alcohol
- › Going missing for periods of time or regularly coming home late
- › Regularly missing school or education
- › Not taking part in education

If a member of staff suspects CCE, they will discuss this with the DSL. The DSL will trigger the local safeguarding procedures, including a referral to the local authority's children's social care team and the police, if appropriate.

Child sexual exploitation

Child sexual exploitation (CSE) is a form of child sexual abuse where an individual or group takes advantage of an imbalance of power to coerce, manipulate or deceive a child into sexual activity, in exchange for something the victim needs or wants and/or for the financial advantage or increased status of the perpetrator or facilitator. It may, or may not, be accompanied by violence or threats of violence.

The abuse can be perpetrated by males or females, and children or adults. It can be a one-off occurrence or a series of incidents over time, and range from opportunistic to complex organised abuse.

The victim can be exploited even when the activity appears to be consensual. Children or young people who are being sexually exploited may not understand that they are being abused. They often trust their abuser and may be tricked into believing they are in a loving, consensual relationship.

CSE can include both physical contact (penetrative and non-penetrative acts) and non-contact sexual activity. It can also happen online. For example, young people may be persuaded or forced to share sexually explicit images of themselves, have sexual conversations by text, or take part in sexual activities using a webcam. CSE may also occur without the victim's immediate knowledge, for example through others copying videos or images.

In addition to the CCE indicators above, indicators of CSE can include a child:

- › Having an older boyfriend or girlfriend
- › Suffering from sexually transmitted infections or becoming pregnant

If a member of staff suspects CSE, they will discuss this with the DSL. The DSL will trigger the local safeguarding procedures, including a referral to the local authority's children's social care team and the police, if appropriate.

Child-on-child abuse

Child-on-child abuse is when children abuse other children. This type of abuse can take place inside and outside of school. It can also take place both face-to-face and online, and can occur simultaneously between the 2.

Our school has a zero-tolerance approach to sexual violence and sexual harassment. We recognise that even if there are there no reports, that doesn't mean that this kind of abuse isn't happening.

Child-on-child abuse is most likely to include, but may not be limited to:

- › Bullying (including cyber-bullying, prejudice-based and discriminatory bullying)
- › Abuse in intimate personal relationships between children (this is sometimes known as 'teenage relationship abuse')
- › Physical abuse such as hitting, kicking, shaking, biting, hair pulling, or otherwise causing physical harm (this may include an online element which facilitates, threatens and/or encourages physical abuse)
- › Sexual violence, such as rape, assault by penetration and sexual assault (this may include an online element which facilitates, threatens and/or encourages sexual violence)
- › Sexual harassment, such as sexual comments, remarks, jokes and online sexual harassment, which may be standalone or part of a broader pattern of abuse
- › Causing someone to engage in sexual activity without consent, such as forcing someone to strip, touch themselves sexually, or to engage in sexual activity with a third party
- › Consensual and non-consensual sharing of nude and semi-nude images and/or videos (also known as sexting or youth produced sexual imagery)
- › Upskirting, which typically involves taking a picture under a person's clothing without their permission, with the intention of viewing their genitals or buttocks to obtain sexual gratification, or cause the victim humiliation, distress or alarm
- › Initiation/hazing type violence and rituals (this could include activities involving harassment, abuse or humiliation used as a way of initiating a person into a group and may also include an online element)

Where children abuse their peers online, this can take the form of, for example, abusive, harassing, and misogynistic messages; the non-consensual sharing of indecent images, especially around chat groups; and the sharing of abusive images and pornography, to those who don't want to receive such content.

If staff have any concerns about child-on-child abuse, or a child makes a report to them, they will follow the procedures set out in section 7 of this policy, as appropriate. In particular, section 7.8 and 7.9 set out more detail about our school's approach to this type of abuse.

When considering instances of harmful sexual behaviour between children, we will consider their ages and stages of development. We recognise that children displaying harmful sexual behaviour have often experienced their own abuse and trauma, and will offer them appropriate support.

Domestic abuse

Children can witness and be adversely affected by domestic abuse and/or violence at home where it occurs between family members. In some cases, a child may blame themselves for the abuse or may have had to leave the family home as a result.

Types of domestic abuse include intimate partner violence, abuse by family members, teenage relationship abuse (abuse in intimate personal relationships between children) and child/adolescent to parent violence and abuse. It can be physical, sexual, financial, psychological or emotional. It can also include ill treatment that isn't physical, as well as witnessing the ill treatment of others – for example, the impact of all forms of domestic abuse on children.

Anyone can be a victim of domestic abuse, regardless of gender, age, ethnicity, socioeconomic status, sexuality or background, and domestic abuse can take place inside or outside of the home. Children who witness domestic abuse are also victims.

Exposure to domestic abuse and/or violence can have a serious, long-lasting emotional and psychological impact on children and affect their health, wellbeing, development and ability to learn.

If police are called to an incident of domestic abuse and any children in the household have experienced the incident, the police will inform the key adult in school (usually the designated safeguarding lead) before the child or children arrive at school the following day as part of Operation Encompass

The DSL will provide support according to the child's needs and update records about their circumstances.

Homelessness

Being homeless or being at risk of becoming homeless presents a real risk to a child's welfare.

The DSL and deputies will be aware of contact details and referral routes in to the local housing authority so they can raise/progress concerns at the earliest opportunity (where appropriate and in accordance with local procedures).

Where a child has been harmed or is at risk of harm, the DSL will also make a referral to children's social care.

So-called 'honour-based' abuse (including FGM and forced marriage)

So-called 'honour-based' abuse (HBA) encompasses incidents or crimes committed to protect or defend the honour of the family and/or community, including FGM, forced marriage, and practices such as breast ironing.

Abuse committed in this context often involves a wider network of family or community pressure and can include multiple perpetrators.

All forms of HBA are abuse and will be handled and escalated as such. All staff will be alert to the possibility of a child being at risk of HBA or already having suffered it. If staff have a concern, they will speak to the DSL, who will activate local safeguarding procedures.

FGM

The DSL will make sure that staff have access to appropriate training to equip them to be alert to children affected by FGM or at risk of FGM.

Section 7.3 of this policy sets out the procedures to be followed if a staff member discovers that an act of FGM appears to have been carried out or suspects that a pupil is at risk of FGM.

Indicators that FGM has already occurred include:

- › A pupil confiding in a professional that FGM has taken place
- › A mother/family member disclosing that FGM has been carried out
- › A family/pupil already being known to social services in relation to other safeguarding issues

› A girl:

- Having difficulty walking, sitting or standing, or looking uncomfortable
- Finding it hard to sit still for long periods of time (where this was not a problem previously)
- Spending longer than normal in the bathroom or toilet due to difficulties urinating
- Having frequent urinary, menstrual or stomach problems
- Avoiding physical exercise or missing PE
- Being repeatedly absent from school, or absent for a prolonged period
- Demonstrating increased emotional and psychological needs – for example, withdrawal or depression, or significant change in behaviour
- Being reluctant to undergo any medical examinations
- Asking for help, but not being explicit about the problem
- Talking about pain or discomfort between her legs

Potential signs that a pupil may be at risk of FGM include:

- › The girl's family having a history of practising FGM (this is the biggest risk factor to consider)
- › FGM being known to be practised in the girl's community or country of origin
- › A parent or family member expressing concern that FGM may be carried out
- › A family not engaging with professionals (health, education or other) or already being known to social care in relation to other safeguarding issues
- › A girl:
 - Having a mother, older sibling or cousin who has undergone FGM
 - Having limited level of integration within UK society
 - Confiding to a professional that she is to have a "special procedure" or to attend a special occasion to "become a woman"
 - Talking about a long holiday to her country of origin or another country where the practice is prevalent, or parents/carers stating that they or a relative will take the girl out of the country for a prolonged period
 - Requesting help from a teacher or another adult because she is aware or suspects that she is at immediate risk of FGM
 - Talking about FGM in conversation – for example, a girl may tell other children about it (although it is important to take into account the context of the discussion)
 - Being unexpectedly absent from school
 - Having sections missing from her 'red book' (child health record) and/or attending a travel clinic or equivalent for vaccinations/anti-malarial medication

The above indicators and risk factors are not intended to be exhaustive.

Forced marriage

Forced marriage is a crime. It is a form of abuse directed towards a child or vulnerable adult, including adults who are forced into marriage against their free will.

Forced marriage is a marriage where one or both spouses do not consent to the marriage but are coerced into it. Force can be physical, psychological, financial, sexual and emotional pressure. Forced marriage can be committed if a person lacks capacity, whether or not coercion plays a part.

Under the Anti-social Behaviour, Crime and Policing Act 2014 a person commits an offence if he or she uses violence, threats or any other form of coercion for the purpose of causing another person to enter into a

marriage and believes, or ought reasonably to believe, that the conduct may cause the other person to enter into the marriage without free and full consent.

It is an offence to do anything intended to cause a child to marry before the child's eighteenth birthday, whether or not the conduct amounts to violence, threats, or any other form of coercion or deception. This applies to non-binding, unofficial 'marriages' as well as legal marriages.

All staff will be alert to the indicators that a pupil is at risk of, or has undergone, forced marriage, including, but not limited to, the pupil:

- Being absent from school – particularly where this is persistent.
- Requesting for extended leave of absence and failure to return from visits to country of origin.
- Being fearful about forthcoming school holidays.
- Being subjected to surveillance by siblings or cousins at school.
- Demonstrating a decline in behaviour, engagement, performance, exam results or punctuality.
- Being withdrawn from school by their parents.
- Being removed from a day centre when they have a physical or learning disability.
- Not being allowed to attend extracurricular activities.
- Suddenly announcing that they are engaged to a stranger, e.g. to friends or on social media.
- Having a family history of forced marriage, e.g. their older siblings have been forced to marry.
- Being prevented from going on to further or higher education.
- Showing signs of mental health disorders and behaviours, e.g. depression, self-harm, anorexia.
- Displaying a sudden decline in their educational performance, aspirations or motivation.

Staff who have any concerns regarding a pupil who may have undergone, is currently undergoing, or is at risk of forced marriage will speak to the DSL or headteacher and local safeguarding procedures will be followed – this could include referral to CSCS, the police or the Forced Marriage Unit. The DSL or headteacher will ensure the pupil is spoken to privately about these concerns and further action taken as appropriate. Pupils will always be listened to and have their comments taken seriously.

It will be made clear to staff members that they should not approach the pupil's family or those with influence in the community, without the express consent of the pupil, as this will alert them to the concerns and may place the pupil in further danger.

Advice will be sought from the Forced Marriage Unit following any suspicion of forced marriage among pupils.

If a pupil is being forced to marry, or is fearful of being forced to, the school will be especially vigilant for signs of mental health disorders and self-harm. The pupil will be supported by the DSL and senior mental health lead and referrals will be made on a case-by-case basis.

Staff members will make themselves aware of how they can support victims of forced marriage in order to respond to the victims needs at an early stage, and be aware of the practical help they can offer, e.g. referral to social services and local and national support groups.

Local child safeguarding procedures will be activated following concerns regarding forced marriage – the school will use existing national and local protocols for multi-agency liaison with police and children's social care.

The school will support any victims to seek help by:

- Making them aware of their rights and choices to seek legal advice and representation.
- Recording injuries and making referrals for medical examination where necessary.
- Providing personal safety advice.
- Developing a safety plan in case they are seen, e.g. by preparing another reason for why the victim is seeking help.

The school will establish where possible whether pupils at risk of forced marriage have a dual nationality or two passports.

The school will aim to create an open environment where pupils feel comfortable and safe to discuss the problems they are facing – this means creating an environment where forced marriage is discussed openly within the curriculum and support and counselling are provided routinely.

The school will take a whole school approach towards educating on forced marriage in the school curriculum and environment – in particular, the school's RSHE curriculum will incorporate teaching about the signs of forced marriage and how to obtain help. Appropriate materials and sources of further support will be signposted to pupils. Pupils will be encouraged to access appropriate advice, information and support.

Teachers and other staff members will be educated through CPD about the issues surrounding forced marriage and the signs to look out for.

Preventing radicalization

For the purposes of this policy, "**radicalisation**" refers to the process by which a person comes to support terrorism and extremist ideologies associated with terrorist groups.

For the purposes of this policy, "**extremism**" refers to the vocal or active opposition to fundamental British values, including democracy, the rule of law, individual liberty, and the mutual respect and tolerance of different faiths and beliefs. Extremism also includes calling for the death of members of the armed forces.

For the purposes of this policy, "**terrorism**" refers to an action that endangers or causes serious violence to a person or people, serious damage to property, or seriously interferes with or disrupts an electronic system. The use or threat of these actions must be designed to influence the government or intimidate the public, and be made for the purpose of advancing a political, religious or ideological cause.

Protecting pupils from the risk of radicalisation is part of the school's wider safeguarding duties. The school will actively assess the risk of pupils being radicalised and drawn into extremism and/or terrorism. Staff will be alert to changes in pupils' behaviour which could indicate that they may need help or protection. Staff will use their professional judgement to identify pupils who may be susceptible to extremist ideologies and radicalisation and act appropriately, which may include contacting the DSL or making a Prevent referral. The school will work with local safeguarding arrangements as appropriate.

The school will ensure that they engage with parents and families, as they are in a key position to spot signs of radicalisation. In doing so, the school will assist and advise family members who raise concerns and provide information for support mechanisms. Any concerns over radicalisation will be discussed with the pupil's parents, unless the school has reason to believe that the child would be placed at risk as a result.

The DSL will undertake Prevent awareness training to be able to provide advice and support to other staff on how to protect pupils against the risk of radicalisation. The DSL will hold formal training sessions with all members of staff to ensure they are aware of the risk indicators and their duties regarding preventing radicalisation.

The Prevent duty

Under section 26 of the Counter-Terrorism and Security Act 2015, all schools are subject to a duty to have "due regard to the need to prevent people from being drawn into terrorism", known as "**the Prevent duty**". The Prevent duty will form part of the school's wider safeguarding obligations.

The school's procedures for carrying out the Prevent duty, including how it will engage and implement the Channel programme, are outline in the Prevent Duty Policy.

Sexual violence and sexual harassment between children in schools

Sexual violence and sexual harassment can occur:

- › Between 2 children of any age and sex
- › Through a group of children sexually assaulting or sexually harassing a single child or group of children
- › Online and face to face (both physically and verbally)

Sexual violence and sexual harassment exist on a continuum and may overlap.

Children who are victims of sexual violence and sexual harassment will likely find the experience stressful and distressing. This will, in all likelihood, adversely affect their educational attainment and will be exacerbated if the alleged perpetrator(s) attends the same school.

If a victim reports an incident, it is essential that staff make sure they are reassured that they are being taken seriously and that they will be supported and kept safe. A victim should never be given the impression that they are creating a problem by reporting any form of abuse or neglect. Nor should a victim ever be made to feel ashamed for making a report.

When supporting victims, staff will:

- › Reassure victims that the law on child-on-child abuse is there to protect them, not criminalise them
- › Regularly review decisions and actions, and update policies with lessons learnt
- › Look out for potential patterns of concerning, problematic or inappropriate behaviour, and decide on a course of action where we identify any patterns
- › Consider if there are wider cultural issues within the school that enabled inappropriate behaviour to occur and whether revising policies and/or providing extra staff training could minimise the risk of it happening again
- › Remain alert to the possible challenges of detecting signs that a child has experienced sexual violence, and show sensitivity to their needs

Some groups are potentially more at risk. Evidence shows that girls, children with SEN and/or disabilities, and lesbian, gay, bisexual and transgender (LGBT) children are at greater risk.

Staff should be aware of the importance of:

- › Challenging inappropriate behaviours
- › Making clear that sexual violence and sexual harassment is not acceptable, will never be tolerated and is not an inevitable part of growing up
- › Challenging physical behaviours (potentially criminal in nature), such as grabbing bottoms, breasts and genitalia, pulling down trousers, flicking bras and lifting up skirts. Dismissing or tolerating such behaviours risks normalising them

If staff have any concerns about sexual violence or sexual harassment, or a child makes a report to them, they will follow the procedures set out in section 7 of this policy, as appropriate. In particular, section 7.8 and 7.9 set out more detail about our school's approach to this type of abuse.

Serious violence

Indicators which may signal that a child is at risk from, or involved with, serious violent crime may include:

- › Increased absence from school
- › Change in friendships or relationships with older individuals or groups
- › Significant decline in performance
- › Signs of self-harm or a significant change in wellbeing
- › Signs of assault or unexplained injuries
- › Unexplained gifts or new possessions (this could indicate that the child has been approached by, or is involved with, individuals associated with criminal networks or gangs and may be at risk of criminal exploitation (see above))

Risk factors which increase the likelihood of involvement in serious violence include:

- › Being male
- › Having been frequently absent or permanently excluded from school
- › Having experienced child maltreatment
- › Having been involved in offending, such as theft or robbery

Staff will be aware of these indicators and risk factors. If a member of staff has a concern about a pupil being involved in, or at risk of, serious violence, they will report this to the DSL.

Checking the identity and suitability of visitors

All visitors will be required to verify their identity to the satisfaction of staff and to leave their belongings, including their mobile phone(s), in a safe place during their visit.

If the visitor is unknown to the setting, we will check their credentials and reason for visiting before allowing them to enter the setting. Visitors should be ready to produce identification.

Visitors are expected to sign the visitors' book and wear a visitor's badge.

Visitors to the school who are visiting for a professional purpose, such as educational psychologists and school improvement officers, will be asked to show photo ID and:

- › Will be asked to show their DBS certificate, which will be checked alongside their photo ID; or
- › The organisation sending the professional, such as the LA or educational psychology service, will provide prior written confirmation that an appropriate level of DBS check has been carried out (if this is provided, we will not ask to see the DBS certificate)

All other visitors, including visiting speakers, will be accompanied by a member of staff at all times. We will not invite into the school any speaker who is known to disseminate extremist views, and will carry out appropriate checks to ensure that any individual or organisation using school facilities is not seeking to disseminate extremist views or radicalise pupils or staff.

Non-collection of children

If a child is not collected at the end of the session/day, we will call the child's parents + other named contacts to establish who is able to collect the child and within which time frame.

In the event that we are unable to contact the child's parents or other named contacts within a reasonable amount of time Thurrock MASH team will be called.

Appendix 5: Acronyms

This policy contains a number of acronyms used in the Education sector. These acronyms are listed below alongside their descriptions.

Acronym	Long form	Description
CCE	Child criminal exploitation	A form of abuse where an individual or group takes advantage of an imbalance of power to coerce, manipulate or deceive a child into taking part in criminal activity in exchange for something the victim needs or wants, for the financial advantage or other advantage of the perpetrator or facilitator, and/or through violence or the threat of violence.
CSCS	Children's social care services	The branch of the local authority that deals with children's social care.
CSE	Child sexual exploitation	A form of sexual abuse where an individual or group takes advantage of an imbalance of power to coerce, manipulate or deceive a child into sexual activity in exchange for something the victim needs or wants, for the financial advantage, increased status or other advantage of the perpetrator or facilitator, and/or through violence or the threat of violence.
DBS	Disclosure and Barring Service	The service that performs the statutory check of criminal records for anyone working or volunteering in a school.
DfE	Department for Education	The national government body with responsibility for children's services, policy and education, including early years, schools, higher and further education policy, apprenticeships and wider skills in England.
DPO	Data protection officer	The appointed person in school with responsibility for overseeing data protection strategy and implementation to ensure compliance with the UK GDPR and Data Protection Act.
DSL	Designated safeguarding lead	A member of the senior leadership team who has lead responsibility for safeguarding and child protection throughout the school.
EEA	European Economic Area	The Member States of the European Union (EU) and three countries of the European Free Trade Association (EFTA) (Iceland, Liechtenstein and Norway; excluding Switzerland).
EHC plan	Education, health and care plan	A funded intervention plan which coordinates the educational, health and care needs for pupils who have significant needs that impact on their learning and access to education. The plan identifies any additional support needs or interventions and the intended impact they will have for the pupil.

ESFA	Education and Skills Funding Agency	An agency sponsored by the Department for Education with accountability for funding education and skills training for children, young people and adults.
FGM	Female genital mutilation	All procedures involving the partial or total removal of the external female genitalia or other injury to the female genital organs. FGM is illegal in the UK and a form of child abuse with long-lasting harmful consequences.
UK GDPR	UK General Data Protection Regulation	Legislative provision designed to strengthen the safety and security of all data held within an organisation and ensure that procedures relating to personal data are fair and consistent.
HBA	'Honour-based' abuse	So-called 'honour-based' abuse involves crimes that have been committed to defend the honour of the family and/or community.
HMCTS	HM Courts and Tribunals Service	HM Courts and Tribunals Service is responsible for the administration of criminal, civil and family courts and tribunals in England and Wales. HMCTS is an executive agency, sponsored by the Ministry of Justice.
IICSA	Independent Inquiry into Child Sexual Abuse	The Independent Inquiry into Child Sexual Abuse is analysing case files from the Disclosure and Barring Service to learn more about the behaviours of perpetrators who have sexually abused children in institutions, and to understand institutional responses to these behaviours.
KCSIE	Keeping children safe in education	Statutory guidance setting out schools and colleges' duties to safeguard and promote the welfare of children.
LA	Local authority	A local government agency responsible for the provision of a range of services in a specified local area, including education.
LAC	Looked-after children	Children who have been placed in local authority care or where children's services have looked after children for more than a period of 24 hours.
LGBTQ+	Lesbian, gay, bisexual, transgender and queer plus	Term relating to a community of people, protected by the Equality Act 2010, who identify as lesbian, gay, bisexual or transgender, or other protected sexual or gender identities.
MAT	Multi-academy trust	A trust established to undertake strategic collaboration and provide education across a number of schools
NPCC	The National Police Chiefs' Council	The National Police Chiefs' Council is a national coordination body for law enforcement in the United Kingdom and the representative body for British police chief officers.

PLAC	Previously looked-after children	Children who were previously in local authority care or were looked after by children's services for more than a period of 24 hours. PLAC are also known as care leavers.
PSHE	Personal, social and health education	A non-statutory subject in which pupils learn about themselves, other people, rights, responsibilities and relationships.
RSHE	Relationships, sex and health education	A compulsory subject from Year 7 for all pupils. Includes the teaching of sexual health, reproduction and sexuality, as well as promoting positive relationships.
SCR	Single central record	A statutory secure record of recruitment and identity checks for all permanent and temporary staff, proprietors, contractors, external coaches and instructors, and volunteers who attend the school in a non-visitor capacity.
SENCO	Special educational needs coordinator	A statutory role within all schools maintaining oversight and coordinating the implementation of the school's special educational needs policy and provision of education to pupils with special educational needs.
SLT	Senior leadership team	Staff members who have been delegated leadership responsibilities in a school.
TRA	Teaching Regulation Agency	An executive agency of the DfE with responsibility for the regulation of the teaching profession.
VSH	Virtual school head	Virtual school heads are in charge of promoting the educational achievement of all the children looked after by the local authority they work for, and all children who currently have, or previously had, a social worker.